



TURBO HD 4.0 SOLUTION

4K AND H.265+

A NEW REVOLUTION

FOR THE ANALOGUE WORLD

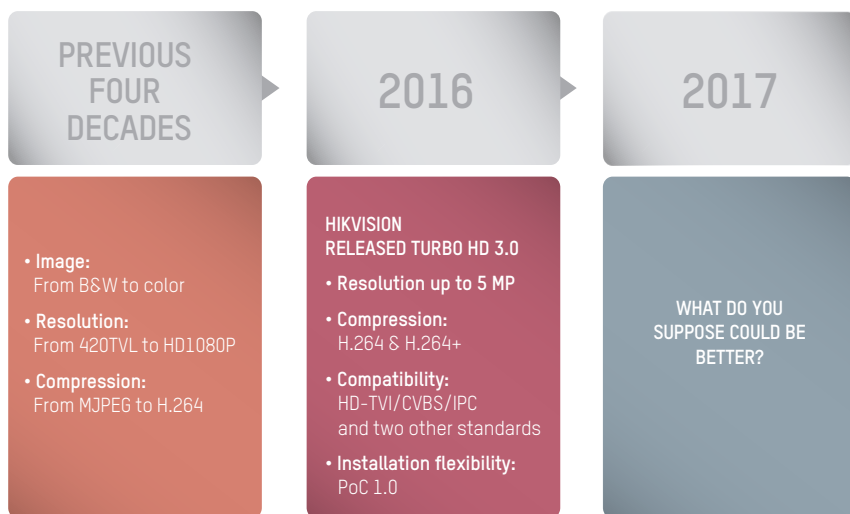
MORE DETAILS WIDER COVERAGE

Analogue video surveillance systems have dominated the security industry for more than forty years. It's about time for a new revolution.

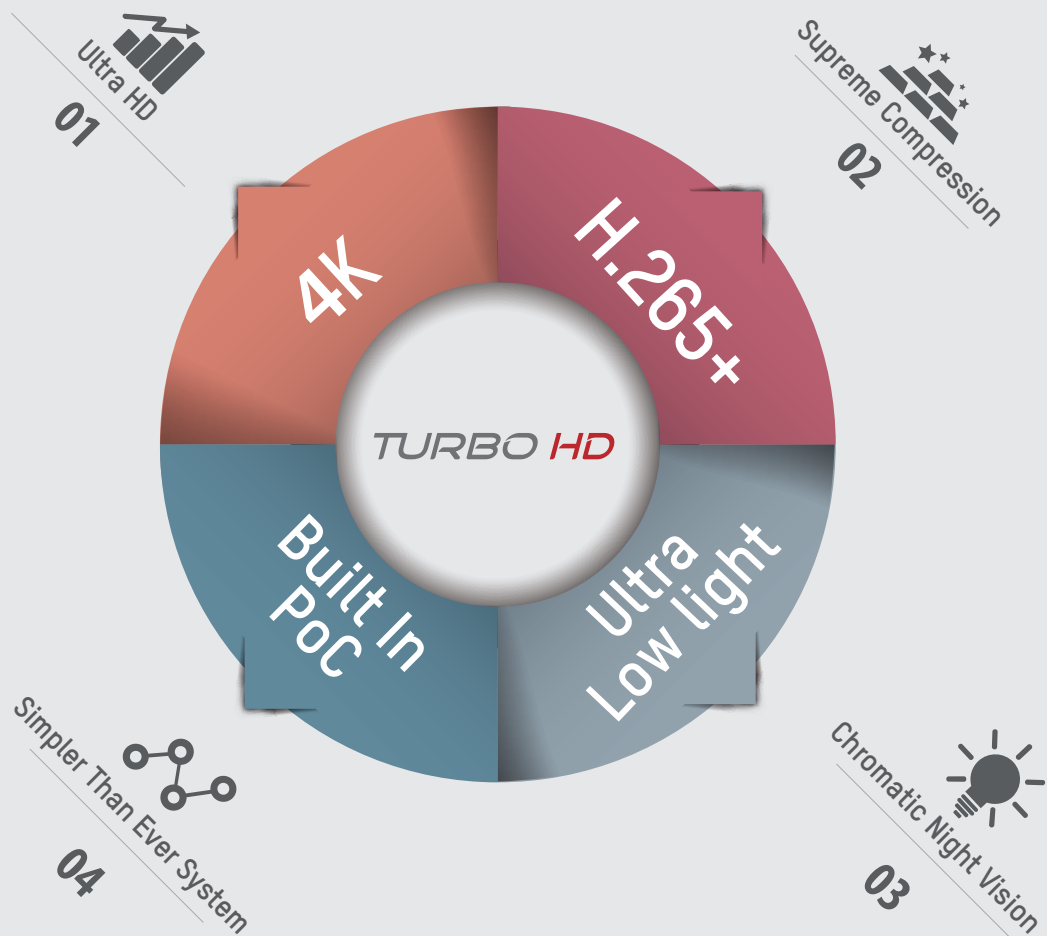
Hikvision introduced its first Turbo HD Solution in 2012, and revolutionized analogue security. After years of fine-tuning and perfecting this powerful solution, Hikvision has launched Turbo HD 4.0 – a brand new revolution in high-definition, high-performance surveillance video.

Turbo HD 4.0 technology gives your analogue security system the powerful boost yet, upgrading the total system to amazing ultra-HD 4K resolution. Bandwidth efficiency improves by 75% using H.265+ compression. And By transmitting both HD video and power over the same coax cable, PoC technology ensures installations are faster, simpler, and less expensive.

Give your analogue surveillance system a big—BIG!—step up in power and performance with Hikvision's Turbo HD 4.0. In this brochure, we will show you how.



HISTORY



01 4K ULTRA HD

Sharp, precise, clear video can make all the difference in critical surveillance situations, enabling security staff to quickly identify suspicious individuals, objects, and movement, and take the right action at the right time.

While most analogue cameras offer only 2 MP resolution, Hikvision's Turbo HD 4.0 Cameras provide ultra-HD resolution up to 4K, resulting in superlative image quality. The latest 4K cameras offer an astounding 8-Megapixel resolution. With wider coverage and more details, 8 MP cameras reduce the blind areas efficiently. A complete, ultra-HD system can be secured from front-end 4K cameras to back-end 4K DVR and 4K HDMI monitors.

End-to-End 4K Solution



8MP
Turbo HD Cameras



Turbo HD 4.0
DVRs



4K Monitor

8 MP = 4 K Resolution

02 H.265+ SUPREME COMPRESSION

More than three years of research and accumulation empowered Hikvision to be the first to release H.265+ on an analogue system—a revolution for analogue. H.265+ takes a huge step up in efficiency over H.264—reducing bitrates by 75% on average while maintaining high transmission quality.

H.265+ compression technology takes analogue even further. Based on the H.265/HEVC codec, H.265+ is an intelligent algorithm developed by Hikvision that can greatly decrease the bitrate of video. Bandwidth is radically reduced, storage requirements are minimized, and image quality improves.

Predictive Encoding

- Extract moving target from stable background
- Different codec for moving target and stable background

Noise Suppression

Extract and filter noise

Long-term Bitrate Control

Throttle bitrate to busy hours over time



+

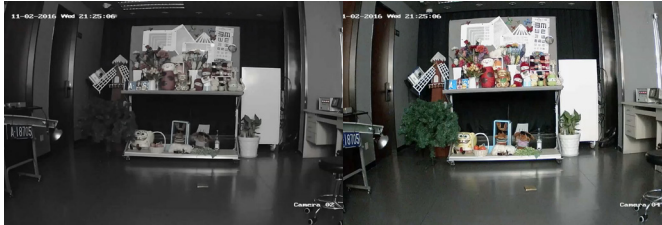


H.265+

A codec technology that has outstanding bandwidth reduction and storage save performance

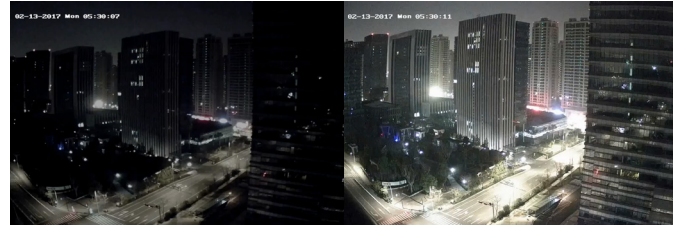
03 ULTRA-LOW LIGHT CHROMATIC NIGHT VISION

Ultra-low illumination cameras from Hikvision vastly improve the efficiency of night monitoring. High-definition 1080p displays come to life with the amazing ultra-low illumination surveillance cameras. With 120 dB WDR and built-in PoC function, these cameras offer users the most advanced security features available. Rest assured that you will see what's really there—in the shadows, at night, and under conditions that leave other cameras in the dark.



Conventional
HD1080P Camera

Turbo HD 4.0 Camera
(0.003 lux)



Conventional
HD1080P Camera

Turbo HD 4.0 Camera
(0.003 lux)

04 BUILT IN PoC SIMPLER THAN EVER SYSTEM

With Hikvision's Turbo HD 4.0 Solution, installers don't have to pull wire. Power-over-coax (POC) supplies the technology to use coax cable to integrate video and DC power. This innovation consists of a front-end POC camera and a back-end Turbo HD DVR, directly embedding the POC power supply into the back-end DVR device. It then transmits the video signal through the coax cable and solves the power supply problem for front-end equipment. Turbo HD 4.0 Solutions reduce the wiring area, save space, and reduce the costs of labor.

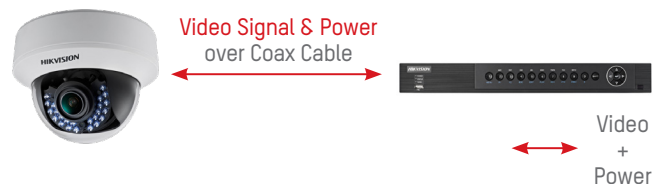
► Conventional Transmission:

Camera requires an external power source to function



► PoC Built In: One Cable Solution

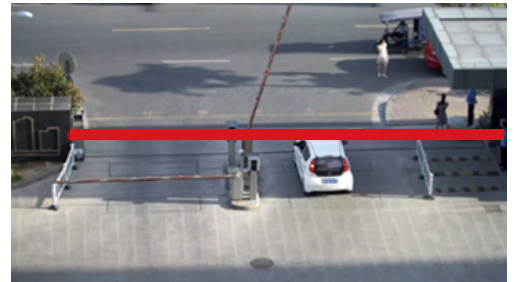
Transmits both HD video and power over the same coax cable
Faster, simpler, and less expensive installations
Patented Hikvision technology



PRODUCT QUALITY MANUFACTURING

SMART DETECTION

The Turbo HD DVR bundles smart features such as face detection, defocus detection, and video analytics. These analytics include traversing a virtual plane, intrusion detection, and scene change detection.



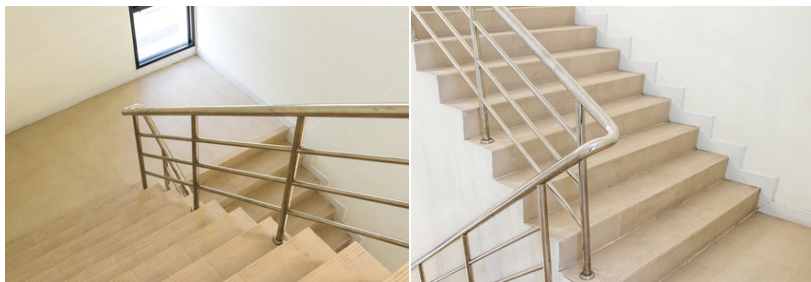
Traversing virtual plane



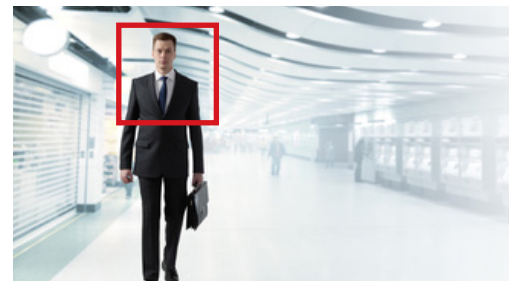
Defocus detection



Intrusion detection



Scene change detection



Face detection

ADVANCED MANUFACTURING LEVEL

As a manufacturer, Hikvision maintains the highest level of control over product quality, and this manufacturing process directly contributes to performance of the Turbo HD Series. The products are processed in a cleanroom for precise assembly of camera lenses. In addition, Hikvision uses automation software and rigorous testing to improve production efficiency and ensure consistency. As a result, Hikvision's integrated lens and other product offerings feature high stability and reliability.

The products also undergo environment, aging, and EMC testing—which means Hikvision Turbo HD products can thrive in extreme temperatures and other very specialized environments.





Because of our advanced, industry-leading manufacturing technologies, the flexible Turbo HD 4.0 Solution offers seamless compatibility with various third-party HDTVI-compliant cameras and DVRs. Your customers don't have to replace each and every component in their setup. With everything you need from cameras to recording devices and more—and extensive compatibility with devices from other manufacturers, too—this easy and affordable solution will upgrade an existing analogue CCTV system to high definition. Hikvision helps you solve surveillance installation and extension problems in any situation you encounter.

Auto Testing

Auto Assembly

Auto Packaging

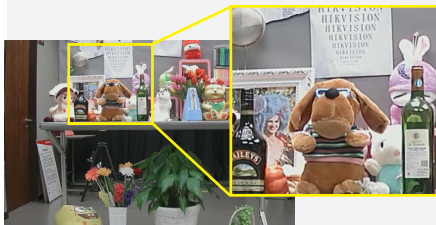
HD LENSES

► High-Definition Lenses

Hikvision hosts its own professional lens division as part of its R&D department—perfecting lens engineering from design to assembly to action.



Conventional lens



Hikvision lens

► Large Aperture

With large apertures, Turbo HD cameras maintain better low-light performance.



Conventional lens



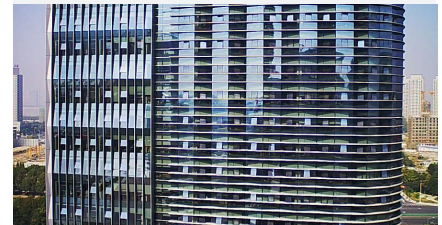
Hikvision lens

► Low Distortion

Hikvision's Turbo HD cameras utilize HD lenses with minimal distortion.



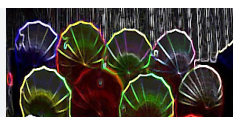
Conventional lens



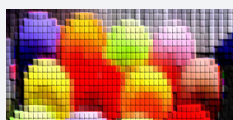
Hikvision lens

04 HIGH-DEFINITION INTER-SYSTEM PROTOCOL

Hikvision's Inter-System Protocol (ISP) provides videos with more details and real color.



Clear



Color



Comfort



Hikvision cameras



Conventional cameras

05 MANUFACTURING

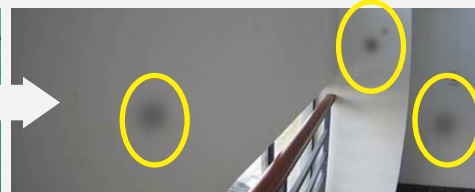
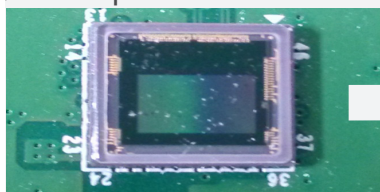
► Clean Room Assembly



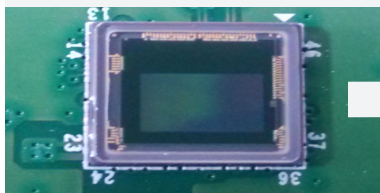
► Automatic Assembly



► Comparison



Dust on sensor



Clean sensor

► HD Lens

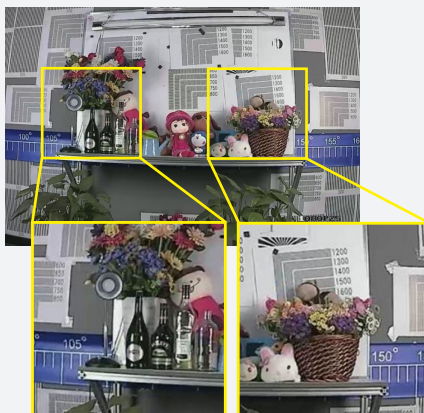


Hikvision's seamless design with an integrated lens

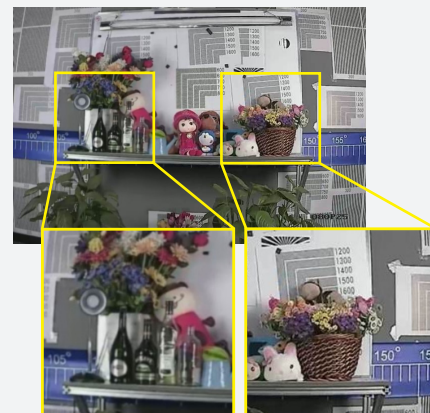


Other brands' design with a separated lens

► Clear & Defocus



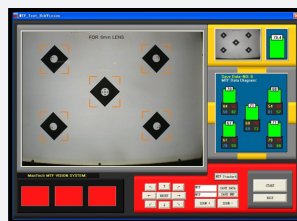
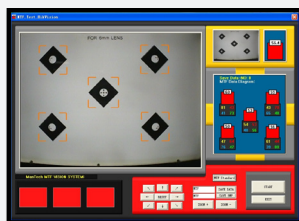
Clear



Defocus

TURBO HD 4.0

► Automation Software



Hikvision uses automation software and tests machines to sustain efficiency and ensure focus consistency. Five quality indicators must all turn from red to green in the focus station.

RELIABILITY

► Environmental Testing



Extreme-temperature test cabinet



Aging room

Temperature

In an extreme-temperature simulation environment, we test operating conditions and eliminate any possible weaknesses.

Mechanical Environment

Test the devices' performance under vibration, shock, or dropping that may occur during transportation and daily use. Determine whether the IR-cut filter switch functions normally and whether defocus occurs.

Special Environment

Test the protection level of devices' enclosure and accessories under salt mist, water, violence, etc.

Special Environments

Our processes test the protection level of device enclosures and accessories under salt mist, water, rough handling, and more.



► Electromagnetic Compatibility (EMC) Test – Surge Protection

Electrostatic Discharge and Anti-Interference

Test a single device's or a system's anti-interference and electrostatic discharge abilities.

• Simulate the electric discharge of operators or objects to the device when in contact or close by.



Surge test device



Test device for electrostatic discharge anti-interference



PRODUCT FEATURES

Turbo HD 8 MP Camera

NEW



DS-2CE17U8T-IT
4K Ultra-Low Light Bullet
Camera

- 8.29 MP high performance COMS
- Ultra-low light 0.003Lux
- 3840 × 2160 resolution
- 2.8 mm, 3.6 mm, 6 mm fixed focal lens
- 120 dB true WDR, 3D DNR
- EXIR 2.0, smart IR, up to 40 m IR distance
- IP67

NEW



DS-2CE57U8T-VPIT
4K Ultra-Low Light Dome
Camera

- 8.29 MP high performance COMS
- Ultra-low light 0.005Lux
- 3840 × 2160 resolution
- 2.8 mm, 3.6 mm, 6 mm fixed focal lens
- 120 dB true WDR, 3D DNR
- EXIR 2.0, smart IR, up to 40 m IR distance
- IP67, IK10

NEW



DS-2CE18U8T-IT3
4K Ultra-Low Light Bullet
Camera

- 8.29 MP high performance COMS
- Ultra-low light 0.005Lux
- 3840 × 2160 resolution
- 2.8 mm, 3.6 mm, 6 mm fixed focal lens
- 120 dB true WDR, 3D DNR
- EXIR 2.0, smart IR, up to 60 m IR distance
- IP67

NEW



DS-2CE59U8T-(A)VPIT3Z
4K Ultra-Low Light VF Dome
Camera

- 8.29 MP high performance COMS
- Ultra-low light 0.005Lux
- 3840 × 2160 resolution
- Auto focus, 2.8 mm to 12 mm motorized vari-focal lens
- 120 dB true WDR, 3D DNR
- EXIR 2.0, smart IR, up to 60 m IR distance
- Dual video output: TVI/CVBS
- Dual voltage input: 12 VDC ±25%/24 VAC ±25%
- IP67, IK10

NEW



DS-2CE19U8T-(A)IT3Z
4K Ultra-Low Light VF Bullet
Camera

- 8.29 MP high performance COMS
- Ultra-low light 0.005Lux
- 3840 × 2160 resolution
- Auto focus, 2.8 mm to 12 mm motorized vari-focal lens
- 120 dB true WDR, 3D DNR
- EXIR 2.0, smart IR, up to 80 m IR distance
- Dual video output: TVI/CVBS
- Dual voltage input: 12 VDC ±25%/24 VAC ±25%
- IP67

NEW



DS-2CE78U8T-IT3
4K Ultra-Low Light Turret
Camera

- 8.29 MP high performance COMS
- Ultra-low light 0.005Lux
- 3840 × 2160 resolution
- 2.8 mm, 3.6 mm, 6 mm fixed focal lens
- 120 dB true WDR, 3D DNR
- EXIR 2.0, smart IR, up to 60 m IR distance
- IP67

NEW



DS-2CE37U8T-A
4K Ultra-Low Light Box
Camera

- 8.29 MP high performance CMOS
- Ultra-low light 0.005Lux
- 3840 × 2160 resolution
- Auto-Iris
- 120 dB true WDR, 3D DNR
- Alarm, and RS-485 Interfaces
- Dual video output: TVI/CVBS
- Dual voltage input: 12 VDC ±25%/24 VAC ±25%

NEW



DS-2CE79U8T-IT3Z
4K Ultra-Low Light VF Turret
Camera

- 8.29 MP high performance COMS
- Ultra-low light 0.005Lux
- 3840 × 2160 resolution
- Auto focus, 2.8 mm to 12 mm motorized vari-focal lens
- 120 dB true WDR, 3D DNR
- EXIR 2.0, smart IR, up to 80 m IR distance
- Dual video output: TVI/CVBS
- IP67

PRODUCT FEATURES

Turbo HD 5 MP EXIR Cameras

NEW


DS-2CC52H1T-FITS
5 MP Fisheye Camera

- Up to 12.5 fps at 5 MP resolution
- 180° panoramic view
- True Day / Night, Smart IR
- Advanced EXIR technology
- Up to 20 m IR distance
- Supports local dewarping

NEW


DS-2CE16H1T-IT
DS-2CE56H1T-ITM
Outdoor EXIR Bullet/Eyeball

- Up to 20 fps at 5 MP resolution
- Switchable between 5 MP and 4 MP resolution
- True Day / Night, Smart IR
- Advanced EXIR technology
- Up to 20 m IR distance
- IP67 weatherproof

NEW


DS-2CE16H1T-IT1/3/5
Outdoor EXIR Bullet

- Up to 20 fps at 5 MP resolution
- Switchable between 5 MP and 4 MP resolution
- True Day / Night, Smart IR
- Advanced EXIR technology
- Up to 20 / 40 / 80 m IR distance
- IP67 weatherproof

NEW


DS-2CE56H1T-IT1/3
Outdoor EXIR Eyeball

- Up to 20 fps at 5 MP resolution
- Switchable between 5 MP and 4 MP resolution
- True Day / Night, Smart IR
- Advanced EXIR technology
- Up to 20 / 40 m IR distance
- IP67 weatherproof

NEW


DS-2CE16H1T-(A)IT3Z
Outdoor EXIR Motorized Vari-focal Bullet

- Up to 20 fps at 5 MP resolution
- Switchable between 5 MP and 4 MP resolution
- True Day / Night, Smart IR
- Advanced EXIR technology
- 2.8 – 12 mm motorized Lens
- 40 m IR distance & IP67 weatherproof
- Dual voltage: 12 VDC / 24 VAC (-A model only)

NEW


DS-2CE56H1T-IT3Z
Outdoor EXIR Motorized Vari-focal Eyeball

- Up to 20 fps at 5 MP resolution
- Switchable between 5 MP and 4 MP resolution
- True Day / Night, Smart IR
- Advanced EXIR technology
- 2.8 – 12 mm motorized Lens
- 40 m IR distance
- IP67 weatherproof

NEW


DS-2CE56H1T-(A)ITZ
Indoor EXIR Motorized Vari-focal Dome

- Up to 20 fps at 5 MP resolution
- Switchable between 5 MP and 4 MP resolution
- True Day / Night, Smart IR
- Advanced EXIR technology
- 2.8 – 12 mm motorized Lens
- 30 m IR distance
- Dual voltage: 12 VDC / 24 VAC (-A model only)

NEW


DS-2CE56H1T-(A)VPIT3Z
Outdoor EXIR Motorized Vari-focal Dome

- Up to 20 fps at 5 MP resolution
- Switchable between 5 MP and 4 MP resolution
- True Day / Night, Smart IR
- Advanced EXIR technology
- 2.8 – 12 mm motorized Lens
- 40 m IR distance
- Vandal proof & IP67 weatherproof
- Dual voltage: 12 VDC / 24 VAC (-A model only)

PRODUCT FEATURES

NEW



DS-2CE16H5T-IT
5 MP Ultra-Low Light Bullet
Camera

- 5 MP high performance COMS
- Ultra-low light 0.005Lux
- 2560 × 1944 resolution
- 2.8 mm, 3.6 mm, 6 mm fixed focal lens
- EXIR 2.0, smart IR, up to 20 m IR distance
- OSD menu, DNR, DWDR
- IP67

NEW



DS-2CE56H5T-IT1/3
5 MP Ultra-Low Light Turret
Camera

- 5 MP high performance COMS
- Ultra-low light
- 2560 × 1944 resolution
- 2.8 mm, 3.6 mm, 6 mm fixed focal lens
- EXIR 2.0, smart IR, up to 20/40m IR distance(it1/3)
- OSD menu, DNR, DWDR
- IP67

NEW



DS-2CE16H5T-IT1/3/5
5 MP Ultra-Low Light Bullet
Camera

- 5 MP high performance COMS
- Ultra-low light
- 2560 × 1944 resolution
- 2.8 mm, 3.6 mm, 6 mm fixed focal lens
- EXIR 2.0, smart IR, up to 20/40/80m IR distance(IT1/3/5)
- OSD menu, DNR, DWDR
- IP67

NEW



DS-2CE56H5T-ITM
5 MP Ultra-Low Light Turret
Camera

- 5 MP high performance COMS
- Ultra-low light
- 2560 × 1944 resolution
- 2.8 mm, 3.6 mm, 6 mm fixed focal lens
- EXIR 2.0, smart IR, up to 20 m IR distance
- OSD menu, DNR, DWDR
- IP67

NEW



DS-2CE16H5T-ITP
5 MP Ultra-Low Light Bullet
Camera

- 5 MP high performance COMS
- Ultra-low light
- 2560 × 1944 resolution
- 2.8 mm, 3.6 mm, 6 mm fixed focal lens
- EXIR 2.0, smart IR, up to 20 m IR distance
- OSD menu, DNR, DWDR
- IP67

NEW



DS-2CE56H5T-VPIT
5 MP Ultra-Low Light Dome
Camera

- 5 MP high performance COMS
- Ultra-low light
- 2560 × 1944 resolution
- 2.8 mm, 3.6 mm, 6 mm fixed focal lens
- EXIR 2.0, smart IR, up to 20 m IR distance
- OSD menu, DNR, DWDR
- IP67, IK10

NEW



DS-2CE16H5T-(A)IT3Z
5 MP Ultra-Low Light VF Bullet
Camera

- 5 MP high performance COMS
- Ultra-low light
- 2560 × 1944 resolution
- EXIR 2.0, smart IR, up to 40 m IR distance
- OSD menu, DNR, DWDR
- 2.8 mm to 12 mm motorized vari-focal lens
- IP67

NEW



DS-2CE56H5T-IT3Z
5 MP Ultra-Low Light VF
Turret Camera

- 5 MP high performance COMS
- Ultra-low light
- 2560 × 1944 resolution
- 2.8 mm to 12 mm motorized vari-focal lens
- EXIR 2.0, smart IR, up to 40 m IR distance
- OSD menu, DNR, DWDR
- IP67

PRODUCT FEATURES

NEW



DS-2CE56H5T-(A)ITZ
5 MP Ultra-Low Light VF
Dome Camera

- 5 MP high performance COMS
- Ultra-low light
- 2560 × 1944 resolution
- 2.8 mm to 12 mm motorized vari-focal lens
- EXIR 2.0, smart IR, up to 30 m IR distance
- OSD menu, DNR, DWDR
- IP65

NEW



DS-2CE56H5T-(A)VPIT3Z
5 MP Ultra-Low Light VF Dome
Camera

- 5 MP high performance COMS
- Ultra-low light
- 2560 × 1944 resolution
- 2.8 mm to 12 mm motorized vari-focal lens
- EXIR 2.0, smart IR, up to 40 m IR distance
- OSD menu, DNR, DWDR
- IP67, IK10

Turbo HD 5 MP EXIR PoC Cameras

NEW



DS-2CE16H5T-ITE
5 MP Ultra-Low Light PoC
Bullet Camera

- 5 MP high performance COMS
- Ultra-low light 0.005Lux
- 2560 × 1944 resolution
- 2.8 mm, 3.6 mm, 6 mm fixed focal lens
- EXIR 2.0, smart IR, up to 20 m IR distance
- OSD menu, DNR, DWDR
- IP67
- PoC

NEW



DS-2CE16H5T-IT1/3/5E
5 MP Ultra-Low Light PoC
Bullet Camera

- 5 MP high performance COMS
- Ultra-low light
- 2560 × 1944 resolution
- 2.8 mm, 3.6 mm, 6 mm fixed focal lens
- EXIR 2.0, smart IR, up to 20/40/80m IR distance(IT1/3/5)
- OSD menu, DNR, DWDR
- IP67
- PoC

NEW



DS-2CE16H5T-IT3ZE
5 MP Ultra-Low Light VF PoC
Bullet Camera

- 5 MP high performance COMS
- Ultra-low light
- 2560 × 1944 resolution
- EXIR 2.0, smart IR, up to 40 m IR distance
- OSD menu, DNR, DWDR
- 2.8 mm to 12 mm motorized vari-focal lens
- IP67
- PoC

NEW



DS-2CE56H5T-IT1/3E
5 MP Ultra-Low Light PoC
Turret Camera

- 5 MP high performance COMS
- Ultra-low light
- 2560 × 1944 resolution
- 2.8 mm, 3.6 mm, 6 mm fixed focal lens
- EXIR 2.0, smart IR, up to 20/40m IR distance(it1/3)
- OSD menu, DNR, DWDR
- IP67
- PoC

NEW



DS-2CE56H5T-ITME
5 MP Ultra-Low Light PoC
Turret Camera

- 5 MP high performance COMS
- Ultra-low light
- 2560 × 1944 resolution
- 2.8 mm, 3.6 mm, 6 mm fixed focal lens
- EXIR 2.0, smart IR, up to 20 m IR distance
- OSD menu, DNR, DWDR
- IP67
- PoC

NEW



DS-2CE56H5T-VPITE
5 MP Ultra-Low Light PoC
Dome Camera

- 5 MP high performance COMS
- Ultra-low light
- 2560 × 1944 resolution
- 2.8 mm, 3.6 mm, 6 mm fixed focal lens
- EXIR 2.0, smart IR, up to 20 m IR distance
- OSD menu, DNR, DWDR
- IP67, IK10
- PoC

PRODUCT FEATURES

NEW



DS-2CE56H5T-IT3ZE
5 MP Ultra-Low Light VF PoC
Turret Camera

- 5 MP high performance COMS
- Ultra-low light
- 2560 × 1944 resolution
- 2.8 mm to 12 mm motorized vari-focal lens
- EXIR 2.0, smart IR, up to 40 m IR distance
- OSD menu, DNR, DWDR
- IP67
- PoC

NEW



DS-2CE56H5T-ITZE
5 MP Ultra-Low Light VF PoC
Dome Camera

- 5 MP high performance COMS
- Ultra-low light
- 2560 × 1944 resolution
- 2.8 mm to 12 mm motorized vari-focal lens
- EXIR 2.0, smart IR, up to 30 m IR distance
- OSD menu, DNR, DWDR
- IP65
- PoC

NEW



DS-2CE56H5T-VPIT3ZE
5 MP Ultra-Low Light VF PoC
Dome Camera

- 5 MP high performance COMS
- Ultra-low light
- 2560 × 1944 resolution
- 2.8 mm to 12 mm motorized vari-focal lens
- EXIR 2.0, smart IR, up to 40 m IR distance
- OSD menu, DNR, DWDR
- IP67, IK10
- PoC

NEW



DS-2CE16H1T-IT1/3/5E
5 MP EXIR PoC Bullet Camera

- 5 MP high-performance CMOS
- 2560 × 1944 resolution
- 2.8 mm, 3.6 mm, 6 mm fixed focal lens
- EXIR 2.0, smart IR, up to 20/40/80m IR distance(IT1/3/5)
- OSD menu, DNR, DWDR
- IP67
- PoC

NEW



DS-2CE16H1T-IT3ZE
5 MP VF PoC Bullet Camera

- 5 MP high-performance CMOS
- 2560 × 1944 resolution
- 2.8 mm to 12 mm motorized vari-focal lens
- EXIR 2.0, smart IR, up to 40 m IR distance
- OSD menu, DNR, DWDR
- IP67
- PoC

NEW



DS-2CE56H1T-IT1/3E
5 MP EXIR PoC Turret Camera

- 5 MP high-performance CMOS
- 2560 × 1944 resolution
- 2.8 mm, 3.6 mm, 6 mm fixed focal lens
- EXIR 2.0, smart IR, up to 20/40m IR distance(IT1/3)
- OSD menu, DNR, DWDR
- IP67
- PoC

NEW



DS-2CE56H1T-ITME
5 MP EXIR PoC Turret Camera

- 5 MP high-performance CMOS
- 2560 × 1944 resolution
- 2.8 mm, 3.6 mm, 6 mm fixed focal Lens
- EXIR 2.0, smart IR, up to 20 m IR distance
- OSD menu, DNR, DWDR
- IP67
- PoC

NEW



DS-2CE56H1T-VPITE
5 MP EXIR PoC Dome Camera

- 5 MP high-performance CMOS
- 2560 × 1944 resolution
- 2.8 mm, 3.6 mm, 6 mm fixed focal lens
- EXIR 2.0, smart IR, up to 20 m IR distance
- OSD menu, DNR, DWDR
- IP67, IK10
- PoC

PRODUCT FEATURES

NEW


DS-2CE56H1T-IT3ZE
5 MP VF PoC Turret Camera

- 5 MP high-performance CMOS
- 2560 × 1944 resolution
- 2.8 mm to 12 mm motorized vari-focal lens
- EXIR 2.0, smart IR, up to 40 m IR distance
- OSD menu, DNR, DWDR
- IP67
- PoC

NEW


DS-2CE56H1T-ITZE
5 MP VF PoC Dome Camera

- 5 MP high-performance CMOS
- 2560 × 1944 resolution
- 2.8 mm to 12 mm motorized vari-focal lens
- EXIR 2.0, smart IR, up to 30 m IR distance
- OSD menu, DNR, DWDR
- IP65
- PoC

NEW


DS-2CE56H1T-VPIT3ZE
5 MP VF PoC Dome Camera

- 5 MP high-performance CMOS
- 2560 × 1944 resolution
- 2.8 mm to 12 mm motorized vari-focal lens
- EXIR 2.0, smart IR, up to 40 m IR distance
- OSD menu, DNR, DWDR
- IP67, IK10
- PoC

NEW


DS-2CE11D8T-PIRL
2 MP Ultra-Low Light PIR
Bullet Camera

- 2 MP high performance CMOS
- Ultra-low light 0.005Lux
- 1920 × 1080 resolution
- 2.8 mm, 3.6 mm fixed focal lens
- PIR detection, visual alarm
- 120 dB true WDR, 3D DNR
- EXIR 2.0, smart IR, up to 20 m IR distance
- IP67

NEW


DS-2CE12D8T-PIRL
2 MP Ultra-Low Light PIR
Bullet Camera

- 2 MP high performance CMOS
- Ultra-low light 0.005Lux
- 1920 × 1080 resolution
- 2.8 mm, 3.6 mm fixed focal lens
- PIR detection, visual alarm
- 120 dB true WDR, 3D DNR
- EXIR 2.0, smart IR, up to 20 m IR distance
- IP67

NEW


DS-2CE38D8T-PIR
2 MP Ultra-Low Light Cube
Camera

- 2 MP high performance CMOS
- Ultra-low light 0.005Lux
- 1920 × 1080 resolution
- 2.8 mm, 3.6 mm, 6 mm fixed focal lens
- 120 dB true WDR, 3D DNR
- PIR detection
- Smart IR, up to 20 m IR distance
- Built-in microphone

NEW


DS-2CE71D8T-PIRL
2 MP Ultra-Low Light PIR
Turret Camera

- 2 MP high performance CMOS
- Ultra-low light 0.005Lux
- 1920 × 1080 resolution
- 2.8 mm, 3.6 mm fixed focal lens
- PIR detection, visual alarm
- 120 dB true WDR, 3D DNR
- EXIR 2.0, smart IR, up to 20 m IR distance
- IP67

NEW


DS-2CC12D9T-IT3/5E
HD1080P PoC Bullet

- Built-in PoC (Power over Coax)
- True Day / Night,
- True WDR, Smart IR
- Advanced EXIR technology
- Up to 40 / 80 m IR distance
- IP67 weatherproof

Turbo HD 1080P Ultra-Low Illumination Cameras

PRODUCT FEATURES

NEW



DS-2CC52D9T-IT3E
HD1080P PoC Eyeball

- Built-in PoC (Power over Coax)
- True Day / Night
- True WDR, Smart IR
- Advanced EXIR technology
- Up to 40 m IR distance
- IP67 weatherproof

NEW



DS-2CC12D9T-AIT3ZE
HD1080P PoC Vari-focal Bullet

- Built-in PoC (Power over Coax)
- True Day / Night
- True WDR, Smart IR
- Advanced EXIR technology
- 2.8 – 12 mm motorized auto focus Lens
- 30 m IR distance
- Dual voltage: 12 VDC/ 24 VAC

NEW



DS-2CC52D9T-AVPIT3ZE
HD1080P PoC Vari-focal Dome

- Built-in PoC (Power over Coax)
- True Day / Night, Smart IR
- Advanced EXIR technology
- 2.8 – 12 mm motorized auto focus Lens
- 40 m IR distance
- Vandal proof & IP67 weatherproof
- Dual voltage: 12 VDC/ 24 VAC

NEW



DS-2CC52D9T-AITZE
HD1080P PoC Vari-focal Dome

- Built-in PoC (Power over Coax)
- True Day / Night
- True WDR, Smart IR
- Advanced EXIR technology
- 2.8 – 12 mm motorized auto focus Lens
- 30 m IR distance
- Dual voltage: 12 VDC/ 24 VAC

Turbo HD HD1080P Ultra Lowlight EXIR Cameras

NEW



DS-2CE16D8T-IT(P)
DS-2CE56D8T-ITM
Outdoor EXIR Bullet/Eyeball

- Turbo HD output, up to HD1080p resolution
- True Day/Night
- True WDR, 3D DNR, Smart IR
- Ultra low illumination 0.005 lux/F1.2
- Up to 20m IR distance
- IP66 weatherproof

NEW



DS-2CE56D8T-VPIT
Outdoor Vandalproof EXIR
Dome

- Turbo HD output, up to HD1080p resolution
- True Day/Night
- True WDR, 3D DNR, Smart IR
- Ultra low illumination 0.005 lux/F1.2
- Up to 20m IR distance
- IP66 weatherproof

NEW



DS-2CE16D8T-IT1/3/5
Outdoor EXIR Bullet

- Turbo HD output, up to HD1080p resolution
- True Day/Night
- True WDR, 3D DNR, Smart IR
- Ultra low illumination 0.005 lux/F1.2
- 20/40/80m IR distance
- IP66 weatherproof

NEW



DS-2CE56D8T-IT1/3
Outdoor EXIR Eyeball

- Turbo HD output, up to HD1080p resolution
- True Day/Night
- True WDR, 3D DNR, Smart IR
- Ultra low illumination 0.005 lux/F1.2
- 20/40m IR distance
- IP66 weatherproof

PRODUCT FEATURES

NEW



DS-2CE16D8T-(A)IT3Z
Outdoor EXIR Motorized VF
Auto Focus Bullet

- Turbo HD output, up to HD1080p resolution
- True Day/Night
- True WDR, 3D DNR, Smart IR
- 2.8-12mm motorized auto focus Lens
- Ultra low illumination 0.005 lux/F1.2
- 40m IR distance
- IP66 weatherproof
- Dual voltage: 12 VDC/ 24 VAC (-A model only)

NEW



DS-2CE56D8T-IT3Z
Outdoor EXIR Motorized VF
Auto Focus Eyeball

- Turbo HD output, up to HD1080p resolution
- True Day/Night
- True WDR, 3D DNR, Smart IR
- Ultra low illumination 0.005 lux/F1.2
- 2.8-12mm motorized auto focus Lens
- 40m IR distance
- IP66 weatherproof

NEW



DS-2CE56D8T-(A)ITZ
Indoor EXIR Motorized VF
Auto Focus Dome

- Turbo HD output, up to HD1080p resolution
- True Day/Night
- True WDR, 3D DNR, Smart IR
- Ultra low illumination 0.005 lux/F1.2
- 2.8-12mm motorized auto focus Lens
- 30m IR distance
- Dual voltage: 12 VDC/ 24 VAC (-A model only)

NEW



DS-2CE56D8T-(A)VPIT3Z
Outdoor EXIR Motorized VF
Auto Focus Dome

- Turbo HD output, up to HD1080p resolution
- True Day/Night
- True WDR, 3D DNR, Smart IR
- Ultra low illumination 0.005 lux/F1.2
- 2.8-12mm motorized auto focus Lens
- 40m IR distance
- Vandalproof & IP66 weatherproof
- Dual voltage: 12 VDC/ 24 VAC (-A model only)

Turbo HD HD1080P EXIR PoC Cameras

NEW



DS-2CC12D8T-AMM
2 MP Ultra-Low Light Box
Camera

- 2 MP high performance CMOS
- Ultra-low light 0.005Lux
- 1920 × 1080 resolution
- 120 dB true WDR, 3D DNR

NEW



DS-2CE16D8T-ITE
DS-2CE56D8T-ITME
Outdoor EXIR Bullet/Eyeball

- Turbo HD output, up to HD1080p resolution
- True Day/Night
- True WDR, 3D DNR, Smart IR
- Ultra low illumination 0.005 lux/F1.2
- Up to 20m IR distance
- Built-in PoC & IP66 weatherproof

NEW



DS-2CE56D8T-VPITE
Outdoor Vandalproof EXIR
Dome

- Turbo HD output, up to HD1080p resolution
- True Day/Night
- True WDR, 3D DNR, Smart IR
- Ultra low illumination 0.005 lux/F1.2
- Up to 20m IR distance
- Built-in PoC & IP66 weatherproof

NEW



DS-2CE16D8T-IT1/3/5E
Outdoor EXIR Bullet

- Turbo HD output, up to HD1080p resolution
- True Day/Night
- True WDR, 3D DNR, Smart IR
- Ultra low illumination 0.005 lux/F1.2
- 20/40/80m IR distance
- Built-in PoC & IP66 weatherproof

PRODUCT FEATURES

NEW



DS-2CE56D8T-IT1/3E
Outdoor EXIR Eyeball

- Turbo HD output, up to HD1080p resolution
- True Day/Night
- True WDR, 3D DNR, Smart IR
- Ultra low illumination 0.005 lux/F1.2
- 20/40m IR distance
- Built-in PoC & IP66 weatherproof

NEW



DS-2CE16D8T-(A)IT3ZE
Outdoor EXIR Motorized VF
Auto Focus Bullet

- Turbo HD output, up to HD1080p resolution
- True Day/Night
- True WDR, 3D DNR, Smart IR
- 2.8-12mm motorized auto focus Lens
- Ultra low illumination 0.005 lux/F1.2
- 40m IR distance
- IP66 weatherproof
- Built-in PoC, 12 VDC/ 24 VAC (-A model only)

NEW



DS-2CE56D8T-IT3ZE
Outdoor EXIR Motorized VF
Auto Focus Eyeball

- Turbo HD output, up to HD1080p resolution
- True Day/Night
- True WDR, 3D DNR, Smart IR
- Ultra low illumination 0.005 lux/F1.2
- 2.8-12mm motorized auto focus Lens
- 40m IR distance
- Built-in PoC & IP66 weatherproof

NEW



DS-2CE56D8T-(A)ITZE
Indoor EXIR Motorized VF Auto
Focus Dome

- Turbo HD output, up to HD1080p resolution
- True Day/Night
- True WDR, 3D DNR, Smart IR
- Ultra low illumination 0.005 lux/F1.2
- 2.8-12mm motorized auto focus Lens
- 30m IR distance
- Built-in PoC, 12 VDC/ 24 VAC (-A model only)

NEW



DS-2CE56D8T-(A)VPIT3ZE
Outdoor EXIR Motorized VF
Auto Focus Dome

- Turbo HD output, up to HD1080p resolution
- True Day/Night
- True WDR, 3D DNR, Smart IR
- Ultra low illumination 0.005 lux/F1.2
- 2.8-12mm motorized auto focus Lens
- 40m IR distance
- Vandalproof & IP66 weatherproof
- Built-in PoC, 12 VDC/ 24 VAC (-A model only)

NEW



DS-2CE16D0T-IT1/3/5E
2 MP PoC EXIR Bullet Camera

- 2MP high-performance CMOS
- HD analog output, up to 1080p resolution
- 2.8 mm, 3.6 mm, 6 mm fixed focal lens
- True Day/Night
- EXIR 2.0, up to 20/40/80m IR distance(IT1/3/5)
- IP66
- PoC

NEW



DS-2CE56D0T-IT1/3E
2 MP PoC EXIR Turret Camera

- 2 MP high-performance CMOS
- HD analog output, up to 1080p resolution
- 2.8 mm, 3.6 mm, 6 mm fixed focal lens
- True Day/Night
- EXIR 2.0, up to 20/40m IR distance(IT1/3)
- IP66
- PoC

NEW



DS-2CE16D0T-IRE
2 MP PoC IR Bullet Camera

- 2 MP high-performance CMOS
- HD analog output, up to 1080p resolution
- 2.8 mm, 3.6 mm, 6 mm fixed focal lens
- True Day/Night
- Up to 20 m IR distance
- IP66
- PoC

Turbo HD 1080P PoC Cameras

PRODUCT FEATURES

NEW


DS-2CE16D0T-IRPE
2 MP PoC IR Bullet Camera

- 2MP high-performance CMOS
- HD analog output, up to 1080p resolution
- 2.8 mm, 3.6 mm, 6 mm fixed focal lens
- True Day/Night
- Up to 20 m IR distance
- IP66
- PoC

NEW


DS-2CE16D0T-VFIR3E
2 MP VF PoC Bullet Camera

- 2 MP high performance CMOS
- 1920 × 1080 resolution
- 2.8 mm to 12 mm vari-focal lens
- True Day/Night
- Up to 40 m IR distance
- IP66
- PoC

NEW


DS-2CE56D0T-VP3E
2 MP Vandal Proof PoC Dome Camera

- 2 MP high performance CMOS
- 1920 × 1080 resolution
- 2.8 mm to 12 mm vari-focal lens
- True Day/Night
- Up to 40 m IR distance
- IP66, IK10
- PoC

NEW


DS-2CE56D0T-VFIR3E
2 MP VF PoC Turret Camera

- 2 MP high performance CMOS
- 1920 × 1080 resolution
- 2.8 mm to 12 mm vari-focal lens
- True Day/Night
- Up to 40 m IR distance
- IP66
- PoC

NEW


DS-2CE56D0T-VFIRE
2 MP VF PoC Dome Camera

- 2 MP high performance CMOS
- 1920 × 1080 resolution
- 2.8 mm to 12 mm vari-focal lens
- True Day/Night
- Up to 30 m IR distance
- PoC

NEW


DS-2CE56D0T-IRMMF
DS-2CE56D0T-IRPF
Indoor IR Dome/Eyeball

- 2.0 MP high-performance CMOS
- Turbo HD output, up to 1080P resolution
- True Day/Night
- DNR, Smart IR
- Up to 20m IR distance
- HD-TVI / CVI / AHD / CVBS video output

NEW


DS-2CE16D0T-IR(P)F
DS-2CE56D0T-IR(M)F
Outdoor IR Bullet/Eyeball

- 2.0 MP high-performance CMOS
- Turbo HD output, up to 1080P resolution
- True Day/Night
- DNR, Smart IR
- Up to 20m IR distance
- HD-TVI / CVI / AHD / CVBS video output

NEW


DS-2CE56D0T-IT1/3F
Outdoor EXIR Eyeball

- 2.0 MP high-performance CMOS
- Turbo HD output, up to 1080P resolution
- True Day/Night
- DNR, Smart IR
- Up to 20/40m IR distance with EXIR
- IP66 weatherproof
- HD-TVI / CVI / AHD / CVBS video output

PRODUCT FEATURES

NEW



DS-2CE16D0T-IT1/3/5F
Outdoor EXIR Bullet

- 2.0 MP high-performance CMOS
- Turbo HD output, up to 1080P resolution
- True Day/Night
- DNR, Smart IR
- Up to 20/40/80m IR distance with EXIR
- IP66 weatherproof
- HD-TVI / CVI / AHD / CVBS video output

Turbo HD HD720P 4-in-1 Cameras

NEW



DS-2CE16C0T-IR(P)F
DS-2CE56C0T-IR(M)F
Outdoor IR Bullet/Eyeball

- 1.0 MP high-performance CMOS
- Turbo HD output, up to 720P resolution
- True Day/Night
- DNR, Smart IR
- Up to 20m IR distance
- IP66 weatherproof
- HD-TVI / CVI / AHD / CVBS video output

NEW



DS-2CE56C0T-IRMMF
DS-2CE56C0T-IRPF
Indoor IR Dome/Eyeball

- 1.0 MP high-performance CMOS
- Turbo HD output, up to 720P resolution
- True Day/Night
- DNR, Smart IR
- Up to 20m IR distance
- HD-TVI / CVI / AHD / CVBS video output

NEW



DS-2CE16C0T-IT1/3/5F
Outdoor EXIR Bullet

- 1.0 MP high-performance CMOS
- Turbo HD output, up to 720P resolution
- True Day/Night
- DNR, Smart IR
- Up to 20/40/80m IR distance with EXIR
- IP66 weatherproof
- HD-TVI / CVI / AHD / CVBS video output

NEW



DS-2CE56C0T-IT1/3F
Outdoor EXIR Eyeball

- 1.0 MP high-performance CMOS
- Turbo HD output, up to 720P resolution
- True Day/Night
- DNR, Smart IR
- Up to 20/40m IR distance with EXIR
- IP66 weatherproof
- HD-TVI / CVI / AHD / CVBS video output

Turbo HD DVRs

NEW



DS-7324/7332HQHI-K4
3 MP 1.5U Turbo HD DVR

- HD-TVI / CVI / AHD / CVBS/IP video signal supported
- H.264/H.264+/H.265+/H.265 video compression
- Ch 1-4 supports up to 3 MP resolution
- Up to 6 MP IP cameras input
- HDMI output at 4K resolution
- 4 SATA, Up to 8 TB capacity for each disk

NEW



DS-7324/7332HUHI-K4
5 MP 1.5U Turbo HD DVR

- HD-TVI / CVI / AHD / CVBS/IP video signal supported
- H.264/H.264+/H.265+/H.265 video compression
- Up to 5 MP resolution analog cameras input
- Up to 8 MP IP cameras input
- HDMI output at 4K resolution
- 4 SATA, Up to 8 TB capacity for each disk

NEW



DS-8124/8132HQHI-K8
3 MP 2U Turbo HD DVR

- HD-TVI / CVI / AHD / CVBS/IP video signal supported
- H.264/H.264+/H.265+/H.265 video compression
- Up to 3 MP resolution analog cameras input
- Up to 6 MP IP cameras input
- HDMI output at 4K resolution
- 8 SATA, Up to 8 TB capacity for each disk

NEW

DS-8124/8132HUHI-K8
5 MP 2U Turbo HD DVR

- HD-TVI / CVI / AHD / CVBS/IP video signal supported
- H.264/H.264+/H.265+/H.265 video compression
- Up to 5 MP resolution analog cameras input
- Up to 8 MP IP cameras input
- HDMI output at 4K resolution
- 8 SATA, Up to 8 TB capacity for each disk

NEW

DS-9008/9016HUHI-K8
5 MP 2U Turbo HD DVR

- HD-TVI / CVI / AHD / CVBS/IP video signal supported
- H.264/H.264+/H.265+/H.265 video compression
- Up to 5 MP resolution analog cameras input
- Up to 12 MP IP cameras input
- HDMI output at 4K resolution
- 8 SATA, Up to 8 TB capacity for each disk

NEW

DS-9024/9032HUHI-K8
5 MP 2U Turbo HD DVR

- HD-TVI / CVI / AHD / CVBS/IP video signal supported
- H.264/H.264+/H.265+/H.265 video compression
- Up to 5 MP resolution analog cameras input
- Up to 12 MP IP cameras input
- Max 64-ch IP cameras input
- HDMI output at 4K resolution
- 8 SATA, Up to 8 TB capacity for each disk

NEW

DS-7204HTHI-K1
8 MP 1U Turbo HD DVR

- HD-TVI / CVI / AHD / CVBS/IP video signal supported
- H.264/H.264+/H.265+/H.265 video compression
- Up to 8 MP resolution analog cameras input
- Up to 8 MP IP cameras input
- HDMI output at 4K resolution
- 1 SATA, Up to 8 TB capacity for each disk

NEW

DS-7204/7208HTHI-K2
8 MP 1U Turbo HD DVR

- HD-TVI / CVI / AHD / CVBS/IP video signal supported
- H.264/H.264+/H.265+/H.265 video compression
- Up to 8 MP resolution analog cameras input
- Up to 8 MP IP cameras input
- HDMI output at 4K resolution
- 2 SATA, Up to 8 TB capacity for each disk

NEW

DS-7104/08/16HQHI-K1
HD1080P Mini 1U Turbo HD DVR

- 4 / 8 / 16-ch video input, 1-ch audio input
- HD-TVI / CVI / AHD / CVBS / IP video signal supported
- H.264/H.264+/H.265+/H.265 video compression
- Ch 1 / Ch 1-2 / Ch 1-4 supports up to 3 MP resolution,
- HDMI output at 4K resolution (DS-7116HQHI-K1)
- Extended transmission distance over coax cable
- 1 SATA, 2 USB 2.0

NEW

DS-7204/08/16HQHI-K1
HD1080P 1U Turbo HD DVR

- 4 / 8 / 16-ch video input, 1-ch audio input
- HD-TVI / CVI / AHD / CVBS/IP video signal supported
- H.264/H.264+/H.265+/H.265 video compression
- Ch 1 / Ch 1-2 / Ch 1-4 supports up to 3 MP resolution,
- HDMI output at 4K resolution (DS-7216HQHI-K1)
- Extended transmission distance over coax cable
- 1 SATA, 1 USB2.0 & 1 USB3.0 (DS-7216HQHI-K1)

NEW

DS-7208/16HQHI-K2
HD1080P 1U Turbo HD DVR

- 8 / 16-ch video input, 1-ch audio input
- HD-TVI / CVI / AHD / CVBS/IP video signal supported
- H.264/H.264+/H.265+/H.265 video compression
- Ch 1-2 / Ch 1-4 supports up to 3 MP resolution,
- HDMI output at 4K resolution (DS-7216HQHI-K2)
- Extended transmission distance over coax cable
- 2 SATA, 1 USB2.0 & 1 USB3.0 (DS-7216HQHI-K2)

PRODUCT FEATURES

NEW



DS-7204/08HUHI-K1
5 MP 1U Turbo HD DVR

- 4 / 8-ch video input, 4-ch audio input
- HD-TVI / CVI / AHD / CVBS / IP video signal supported
- H.264/H.264+/H.265+/H.265 video compression
- 12 fps recording at 5 MP resolution, 15 fps recording at 4 MP resolution
- HDMI output at 4K resolution (DS-7208HUHI-K1)
- Extended transmission distance over coax cable
- 1 SATA, 1 USB2.0 & 1 USB3.0(DS-7208HUHI-K1)

NEW



DS-7204/08/16HUHI-K2
5 MP 1U Turbo HD DVR

- 4 / 8 / 16-ch video input, 4-ch audio input
- HD-TVI / CVI / AHD / CVBS/IP video signal supported
- H.264/H.264+/H.265+/H.265 video compression
- 12 fps recording at 5 MP resolution, 15 fps recording at 4 MP resolution
- HDMI output at 4K resolution (DS-7208/16HUHI-K2)
- Extended transmission distance over coax cable
- 2 SATA, 1 USB2.0 & 1 USB3.0(DS-7208HUHI-K2, DS-7216HUHI-K2)

NEW



DS-7204HQHI-K1/P
HD1080P 1U Turbo HD PoC DVR

- 4-ch video input, 1-ch audio input
- HD-TVI / CVI / AHD / CVBS/IP video signal supported
- H.264/H.264+/H.265+/H.265 video compression
- Ch 1 supports up to 3 MP resolution
- HDMI and VGA output at up to 1920 x 1080P resolution
- Extended transmission distance over coax cable
- Built-in PoC(only support hikvision PoC camera)
- 1 SATA, 2 USB 2.0

NEW



DS-7208/16HQHI-K2/P
HD1080P 1U Turbo HD PoC DVR

- 8 / 16-ch video input, 1-ch audio input
- HD-TVI / CVI / AHD / CVBS/IP video signal supported
- H.265+ / H.265+ video compression
- Ch 1-2 / Ch 1-4 supports up to 3 MP resolution,
- HDMI output at 4K resolution (DS-7216HQHI-K2/P)
- Extended transmission distance over coax cable
- Built-in PoC(only support hikvision PoC camera)
- 2 SATA, 1 USB2.0 & 1 USB3.0(DS-7216HQHI-K2/P)

NEW



DS-7204HUHI-K1/P
5 MP 1U Turbo HD PoC DVR

- 4-ch video input, 4-ch audio input
- HD-TVI / CVI / AHD / CVBS/IP video signal supported
- H.264/H.264+/H.265+/H.265 video compression
- 12 fps recording at 5 MP resolution, 15 fps recording at 4 MP resolution
- HDMI and VGA output at up to 1920 x 1080P resolution
- Extended transmission distance over coax cable
- Built-in PoC(only support hikvision PoC camera)
- 1 SATA, 2 USB 2.0

NEW



DS-7208HUHI-K2/P
5 MP 1U Turbo HD PoC DVR

- 8-Ch video input, 4-ch audio input
- HD-TVI / CVI / AHD / CVBS/IP video signal supported
- H.264/H.264+/H.265+/H.265 video compression
- 12 fps recording at 5 MP resolution, 15 fps recording at 4 MP resolution
- HDMI output at 4K resolution
- Extended transmission distance over coax cable
- Built-in PoC(only support hikvision PoC camera)
- 2 SATA, 1 USB2.0 & 1 USB3.0(DS-7208HUHI-K2/P)

NEW



DS-7304/08/16HUHI-K4
5 MP 1.5U Turbo HD DVR

- 4 / 8 / 16-ch video input, 4-ch audio input
- HD-TVI / CVI / AHD / CVBS/IP video signal supported
- H.264/H.264+/H.265+/H.265 video compression
- 12 fps recording at 5 MP resolution, 15 fps recording at 4 MP resolution
- Dual HDMI Output, HDMI output at 4K resolution
- Extended transmission distance over coax cable
- 4 SATA, 1 eSATA, 1 USB 3.0 & 2 USB 2.0

NEW



DS-7304/08/16HQHI-K4
3 MP 1.5U Turbo HD DVR

- HD-TVI / CVI / AHD / CVBS/IP video signal supported
- H.264/H.264+/H.265+/H.265 video compression
- Ch 1-2 / Ch 1-4 supports up to 3 MP resolution,
- HDMI output at 4K resolution
- Extended transmission distance over coax cable
- 4 SATA, 2 USB2.0 & 1 USB3.0

PRODUCT FEATURES

NEW



DS-7104/08/16HGHI-F1
720P Mini 1U Turbo HD DVR

- 4/8/16-ch HD TVI/AHD/analogue cameras video&audio input
- HD-TVI/AHD/analogue hybrid
- HD-TVI and analogue cameras self-adaptive access
- Up to full channel@720P resolution real-time recording
- HDMI and VGA output at up to 1920×1080P resolution
- Long transmission distance over coax cable
- 1SATA, 2 USB2.0

NEW



DS-7204/08/16HGHI-F1
DS-7208/16HGHI-F2
720P 1U Turbo HD DVR

- 4/8/16-ch HD TVI/AHD/analogue cameras video&audio input
- HD-TVI/analogue/AHD/IP camera quadruple hybrid
- HD-TVI and analogue cameras self-adaptive access
- Up to full channel@720P resolution real-time recording
- HDMI and VGA output at up to 1920×1080P resolution
- Long transmission distance over coax cable
- Front panel and alarm I/O optional
- 1SATA(DS-7204/08/16HGHI-F1)/2 SATA(DS-7208/16HGHI-F2), 2 USB2.0



DS-1H18
Video Balun



X41T
Camera Tester



DS-1H33
HDTV to HDMI
Converter

TURBO HD 4.0 SOLUTION
4K AND H.265+
A NEW REVOLUTION FOR THE ANALOGUE WORLD



You can rely on Hikvision video surveillance products to meet your security needs.
Our professional partners will be happy to provide you with any information you need.

Distributed by:



HIKVISION®

Hikvision Europe
Dirk Storklaan 3
2132 PX Hoofddorp
The Netherlands
T +31 23 5542770
info.eu@hikvision.com