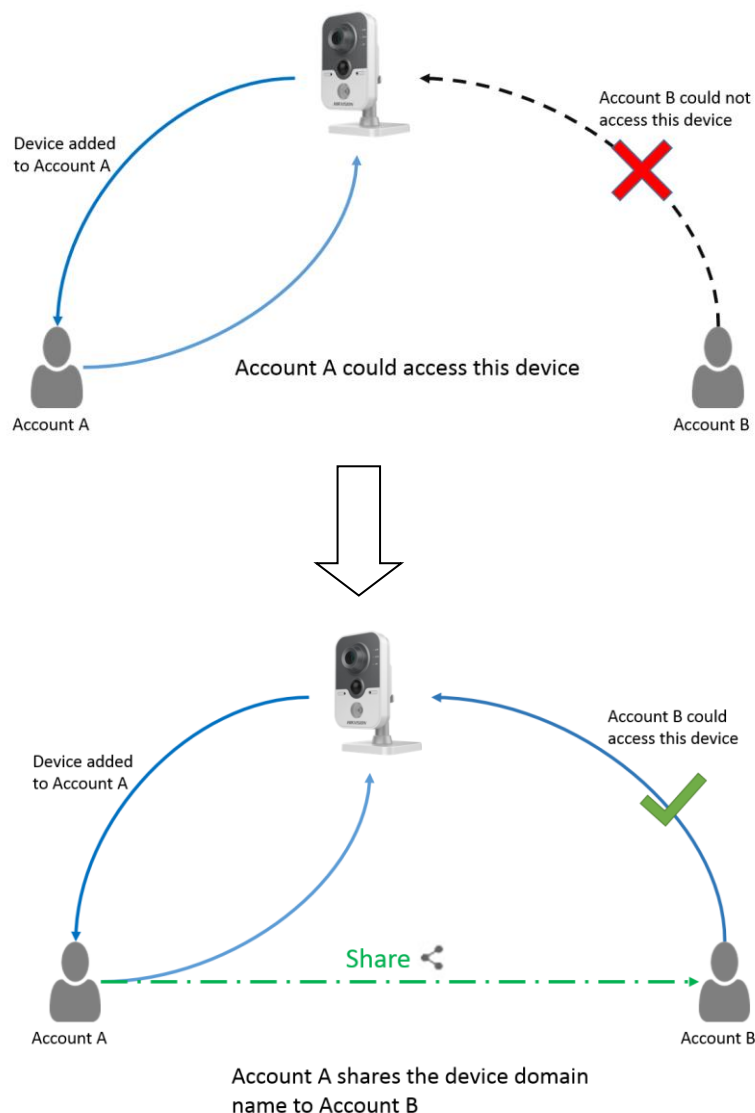


Summary

Hik-Connect Share function shares device domain name.

In hik-connect, one device could only be added into one account; in order to solve the ‘multi people access one device’ problem, **Share** function is released.



Note:

1. Users can use Hik-Connect Share function via Hik-Connect APP and www.hik-connect.com web portal in order to share device to others, or manage the device shared by other;
2. Cross-regional share operation is not allowed;
3. Currently only device domain name could be shared, which means the alarm push function and the live view function in Hik-Connect tab can't be shared;
4. You can set different privileges for different users by providing them with admin/guest/operator account. The privileges are the same between different hik-connect accounts.

Discretion

Title:	How to use Hik-Connect Share function	Version:	v1.1	Date:	3/15/2017
Product:	Cameras, NVRs, DVRs	Page:	2 of 11		

User interface may not be identical to the instructions shown below depending on the product, firmware version. However, the information and settings required to setup Hik-Connect Share function are similar across all supporting products.

Preparation

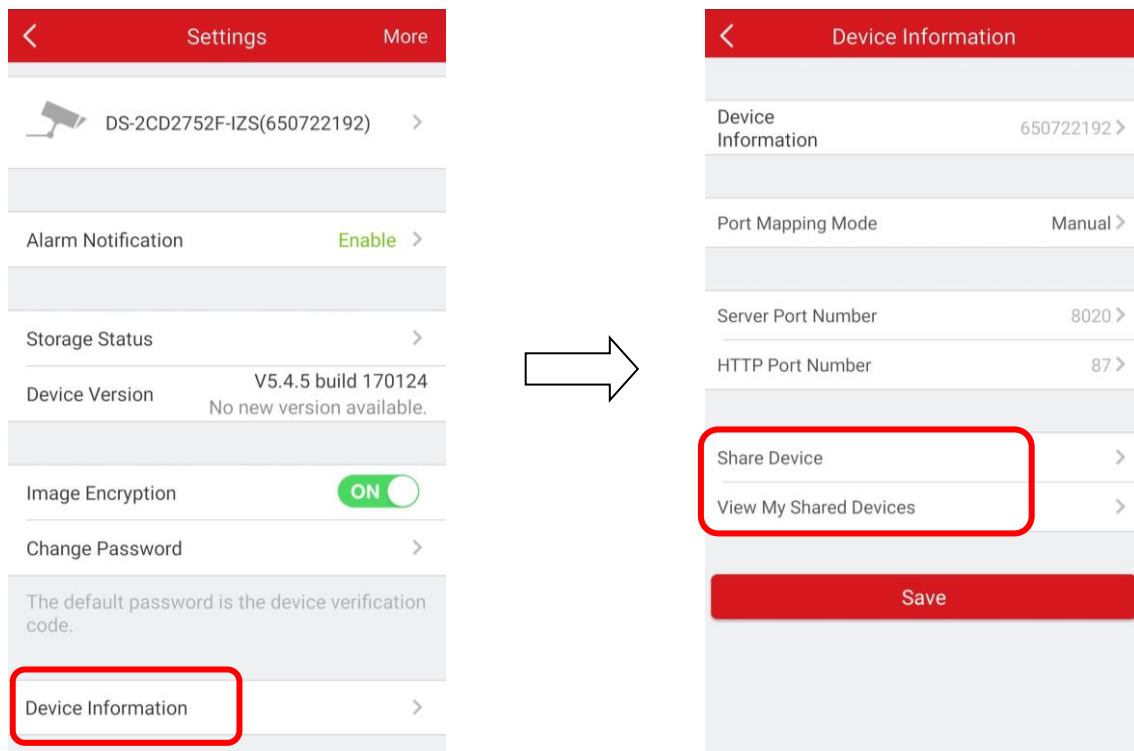
1. Users need to upgrade device to proper firmware that supports Hik-Connect Share function.
2. Users need to upgrade hik-connect app to v2.0.2 that supports Hik-Connect Share function.

How to use Hik-Connect Share function

Method 1: Use Share function via Hik-Connect APP

Steps:

- (1) Run Hik-Connect app at your mobile and login your account;
- (2) Go to hik-connect tab->click your device->click Device Information -> Share Device/ View My Shared Devices;

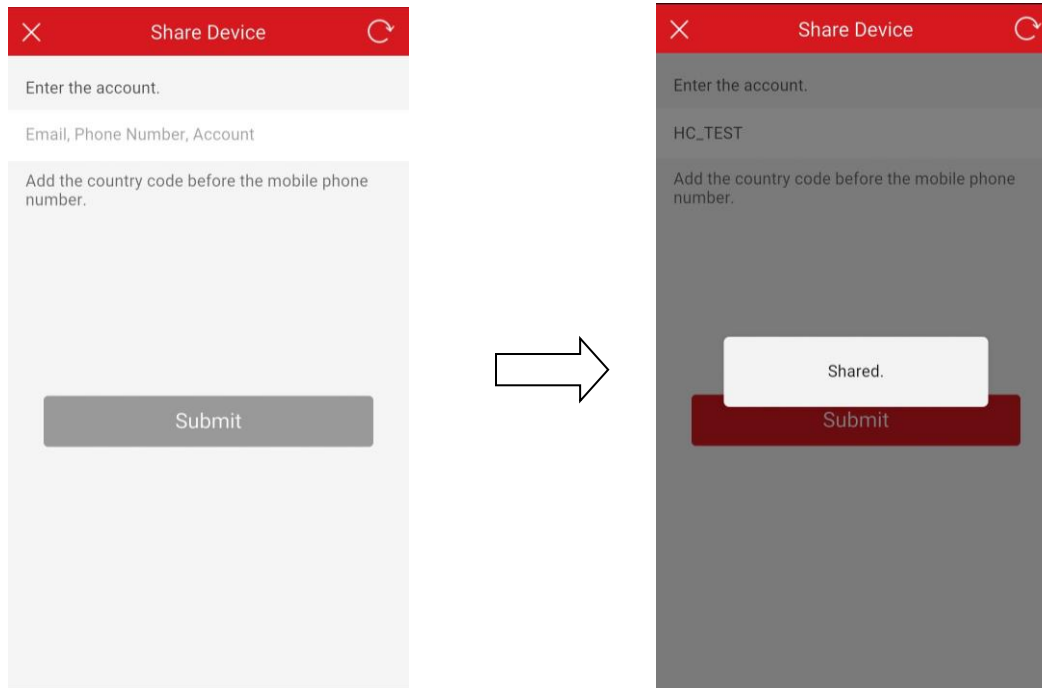


- (3) Click 'Share Device' -> input the Hik-Connect account you want to share (email address, phone number, hik-connect account are supported).

Shared/Network busy/The account doesn't exist will be returned according to the results.

Title:	How to use Hik-Connect Share function	Version:	v1.1	Date:	3/15/2017
Product:	Cameras, NVRs, DVRs	Page:	3 of 11		

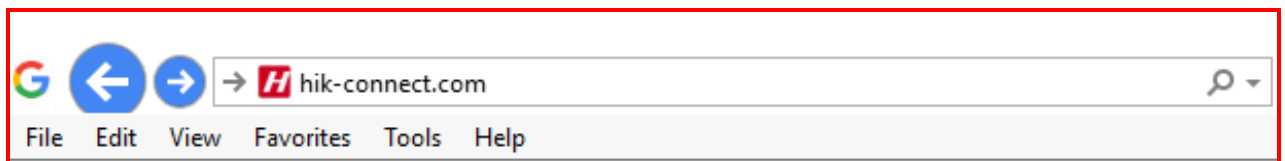
HIKVISION



Method 2: Use Share function via www.hik-connect.com web portal

Steps:

(1) Type www.hik-connect.com into browser location bar;



(2) Login with your account user name and password.

A screenshot of the Hik-Connect login page. The page has a white background with a red border. At the top, it says 'Welcome!'. Below this are two input fields: 'account/email' and 'password'. A blue link 'Forgot the Password?' is located below the password field. A large red 'Login' button is centered below the input fields. Below the 'Login' button is a horizontal line. Below the line, it says 'No account? Register one now.' and a red 'Register' button is centered below it.

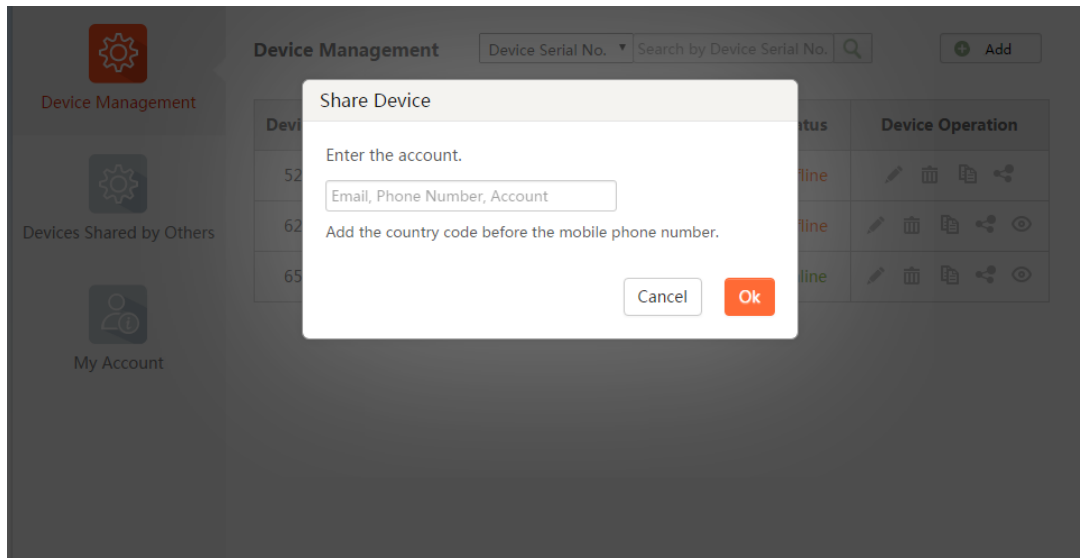
(3) Go to **Device Management** and click **Share** button . Input the Hik-Connect account you want to

Title:	How to use Hik-Connect Share function	Version:	v1.1	Date:	3/15/2017
Product:	Cameras, NVRs, DVRs	Page:	4 of 11		



share (email address, phone number, hik-connect account are supported).

Shared/Network busy/The account doesn't exist will be returned according to the results.

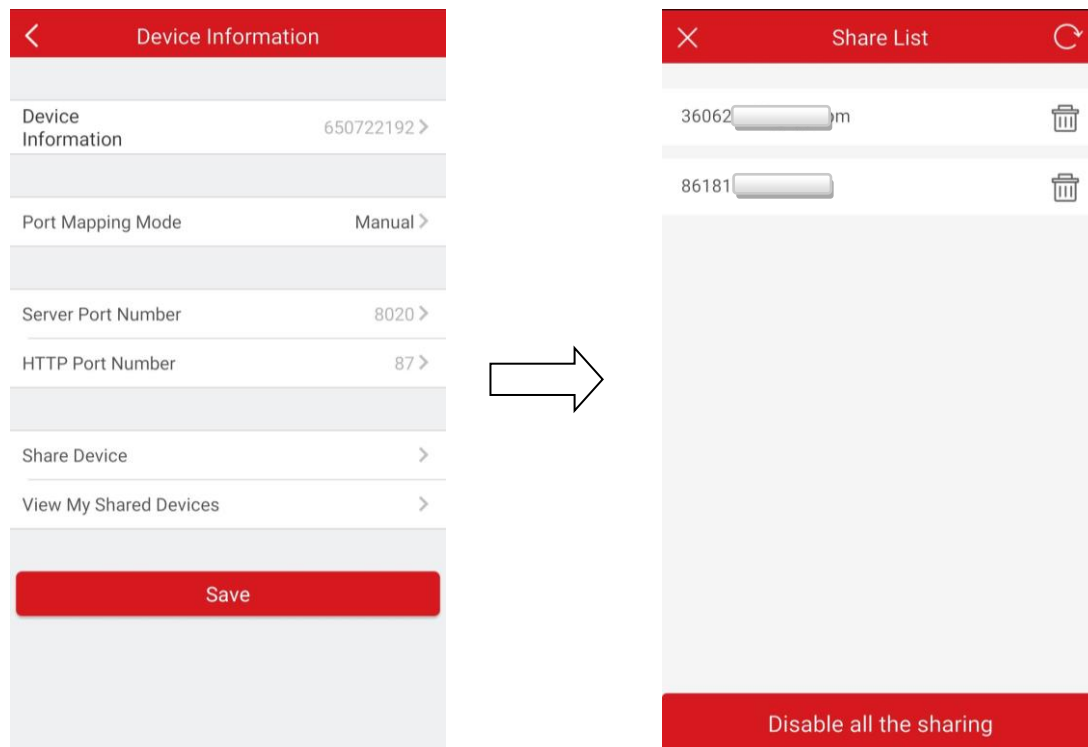


How to manage my shared device

1: How to manage my shared device via app


Steps:

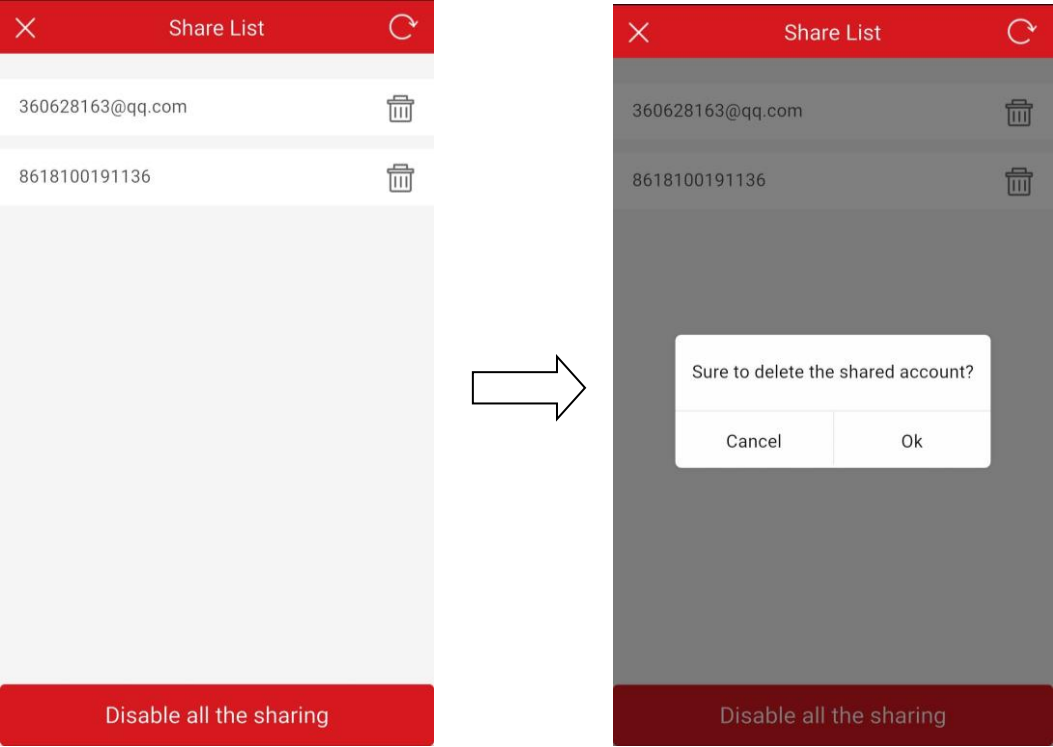
- (1) Run Hik-Connect app at your mobile and login your account;
- (2) Click **View My Shared Devices**, all the accounts that this device has been shared to would be displayed.



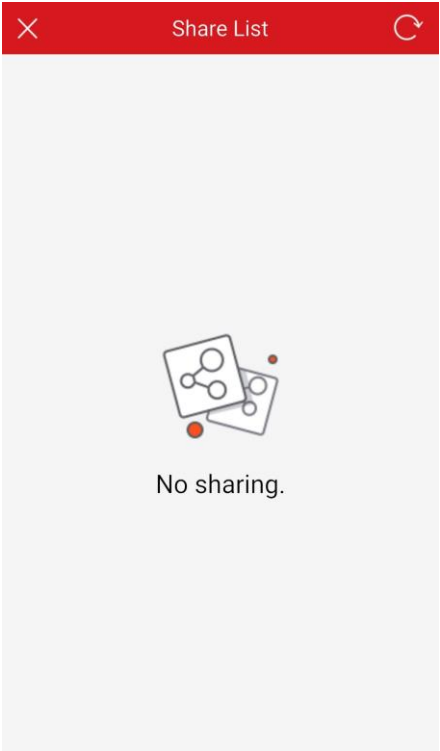
Title:	How to use Hik-Connect Share function	Version:	v1.1	Date:	3/15/2017
Product:	Cameras, NVRs, DVRs	Page:	5 of 11		



(2) Click  to select the account you want to stop sharing. You can also disable all the sharing.





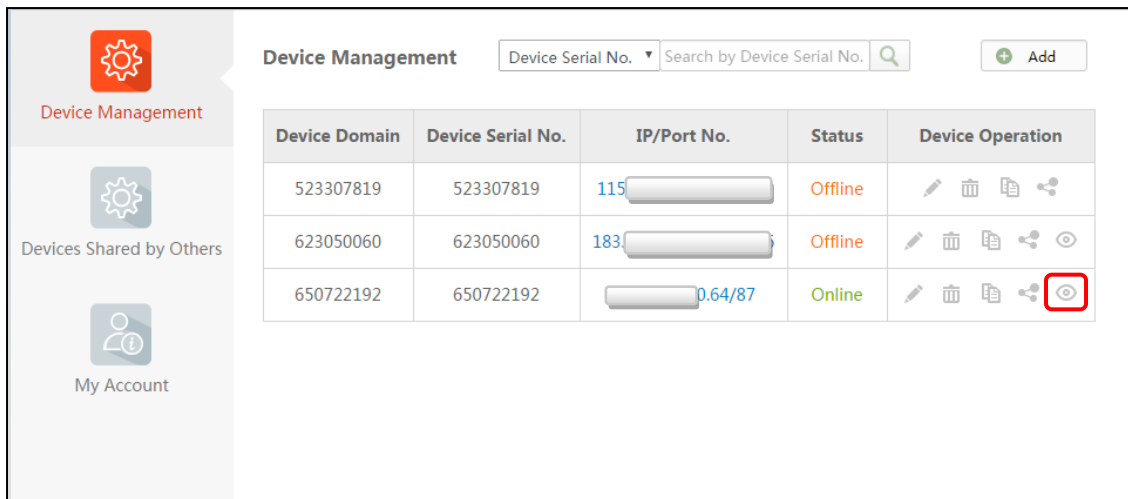
(3) If you disable all the sharing, it would look like this:



2: How to manage my shared device via web portal

Steps:

(1) Click  to check all the accounts that this device has been shared to. The  could only be seen when there is a share under your device.




Device Domain	Device Serial No.	IP/Port No.	Status	Device Operation
523307819	523307819	115	Offline	
623050060	623050060	183	Offline	
650722192	650722192	0.64/87	Online	

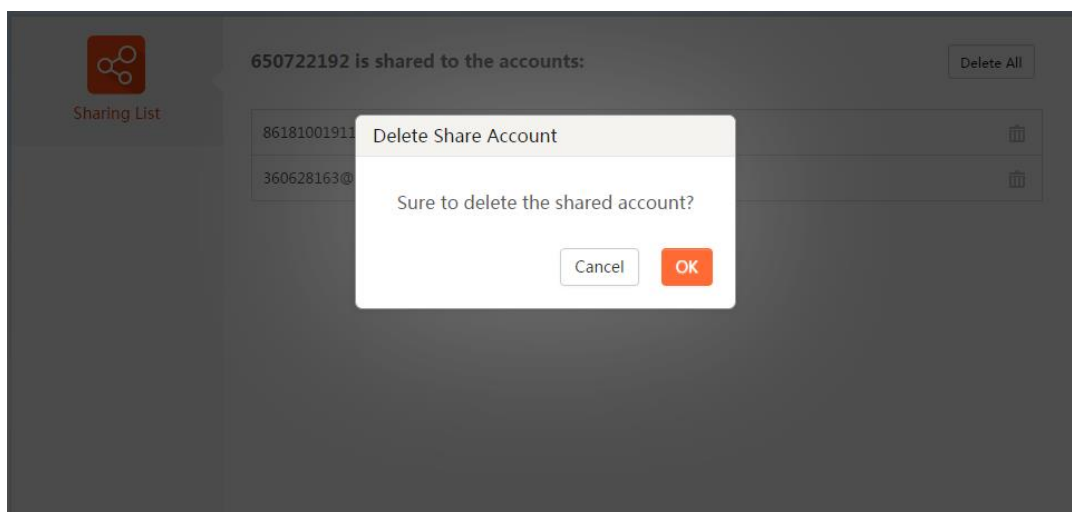


650722192 is shared to the accounts:

86181001911	
360628163@	

Delete All

(2) Click  to select the accounts you want to stop sharing. You can select one account or several accounts.



650722192 is shared to the accounts:

86181001911	
360628163@	

Delete All

Delete Share Account

Sure to delete the shared account?

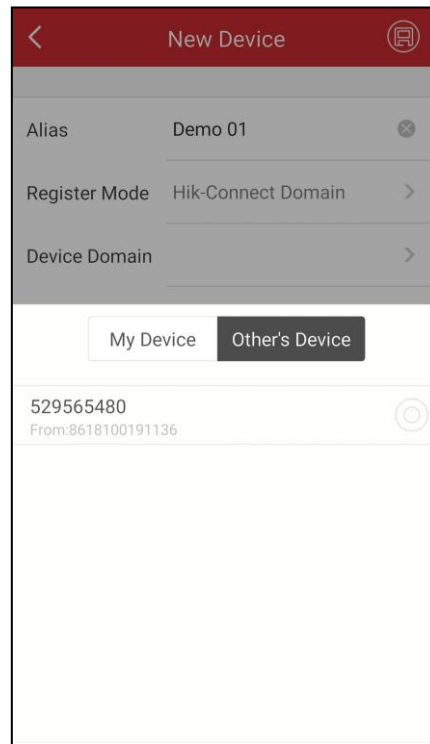
Cancel OK

How to manage the device shared by others

1: How to manage the shared device by others via app

Steps:

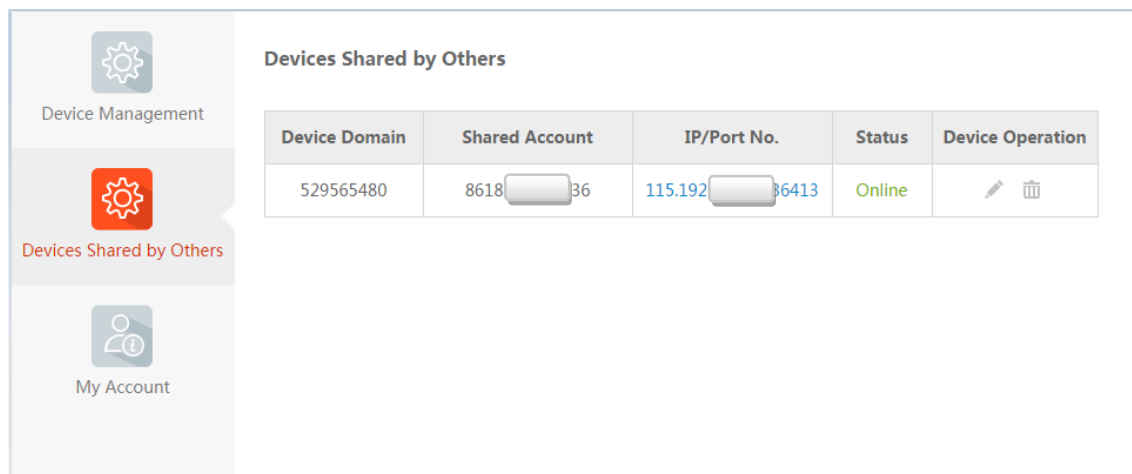
- (1) Run Hik-Connect app at your mobile and login your account;
- (2) Go to Domain tab-> click **Manual Adding**-> select Register Mode as **Hik-Connect Domain**->go to **Device Domain**, then you can find the device shared by others. Together with the shared device are the device domain name & the account which shares this device.



2: How to manage the device shared by others via web portal


Steps:

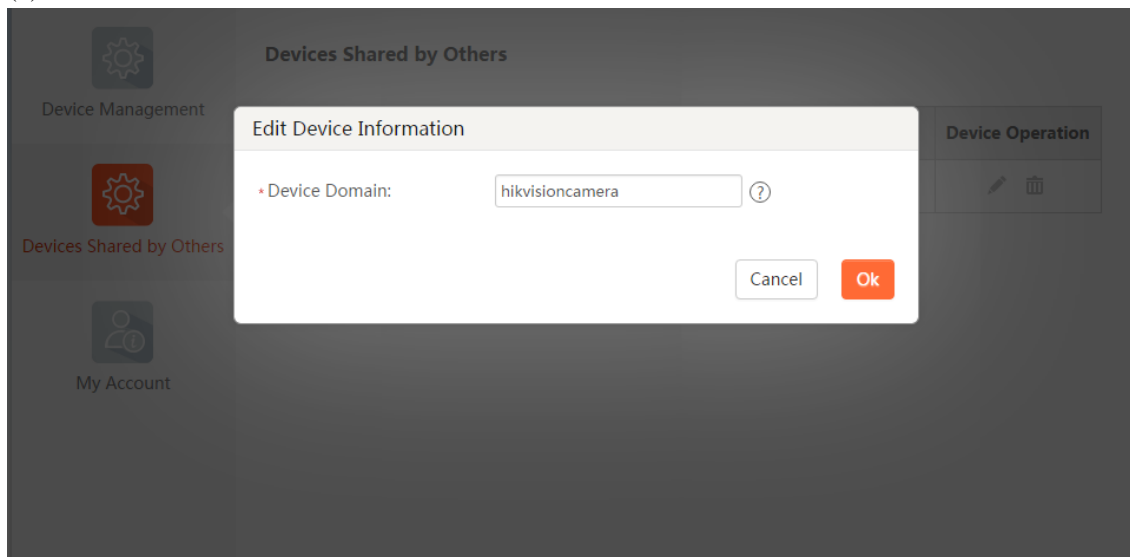
- (1) If your account receive a share, there will be an **Added Device** column on web browser.




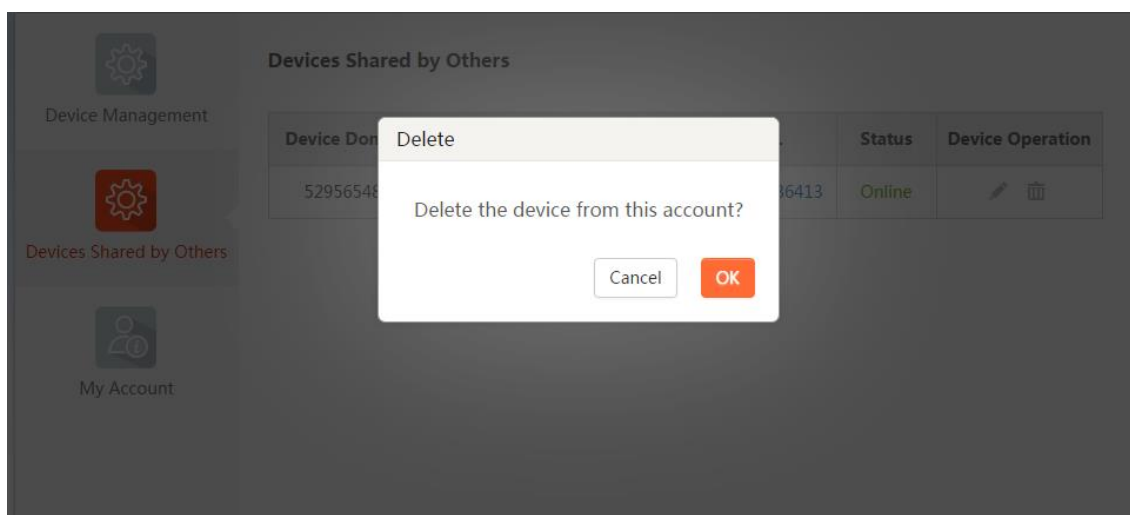
Title:	How to use Hik-Connect Share function	Version:	v1.1	Date:	3/15/2017
Product:	Cameras, NVRs, DVRs	Page:	8 of 11		

HIKVISION

(2) Click **Edit**  to edit the device domain.



(3) Click  to delete the device that others shared to your account.



First Choice for Security Professionals
HIKVISION Technical Support