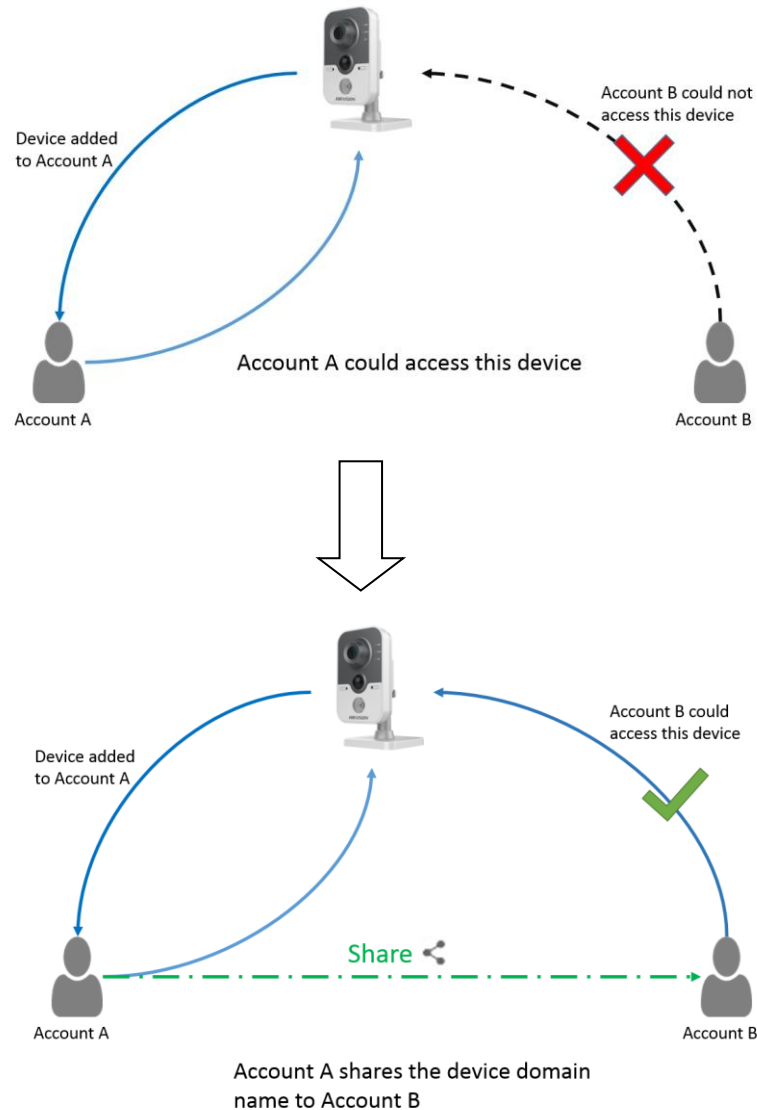


## Summary

### Hik-Connect Share function shares device domain name.

In hik-connect, one device could only be added into one account; in order to solve the ‘multi people access one device’ problem, **Share** function is released.



### Note:

1. Users can use Hik-Connect Share function via Hik-Connect APP and [www.hik-connect.com](http://www.hik-connect.com) web portal in order to share device to others, or manage the device shared by other;
2. Cross-regional share operation is not allowed;
3. Currently only device domain name could be shared, which means the alarm push function and the live view function in Hik-Connect tab can't be shared;
4. You can set different privileges for different users by providing them with admin/guest/operator account. The privileges are the same between different hik-connect accounts.

## Discretion

<b>Title:</b>	How to use Hik-Connect Share function	<b>Version:</b>	v1.2	<b>Date:</b>	3/22/2017
<b>Product:</b>	Cameras, NVRs, DVRs	<b>Page:</b>	2 of 9		

User interface may not be identical to the instructions shown below depending on the product, firmware version. However, the information and settings required to setup Hik-Connect Share function are similar across all supporting products.

## Preparation

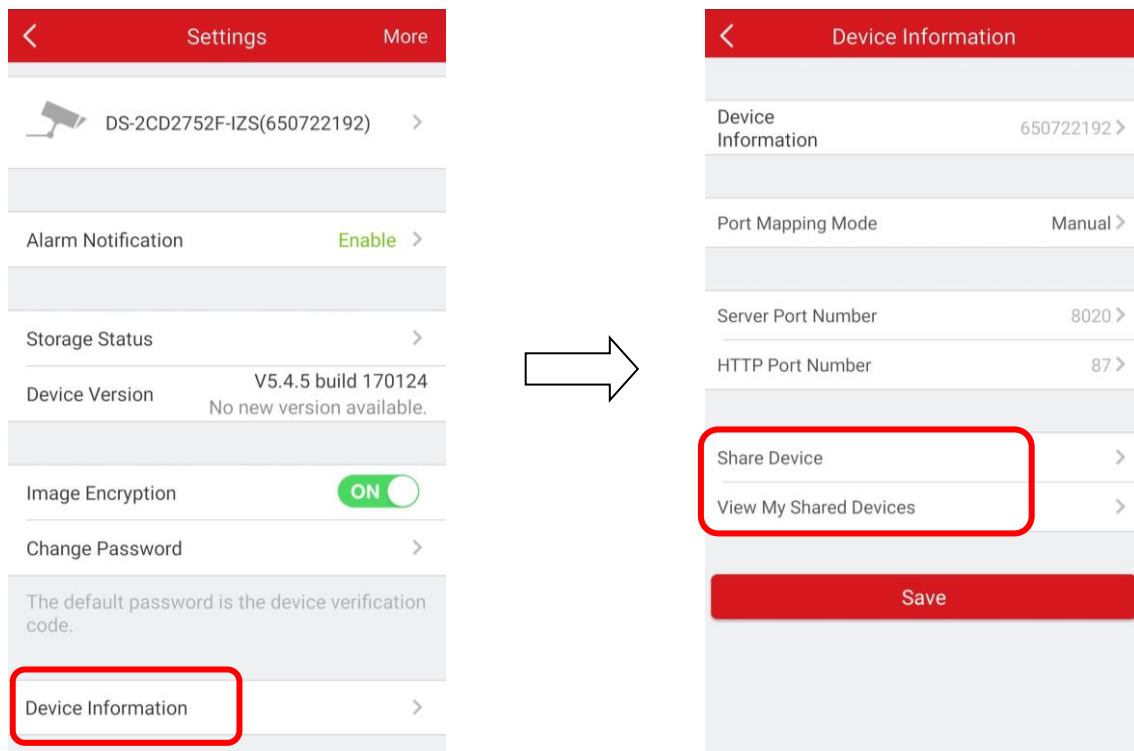
1. Users need to upgrade device to proper firmware that supports Hik-Connect Share function.
2. Users need to upgrade hik-connect app to v2.0.2 that supports Hik-Connect Share function.

## How to use Hik-Connect Share function

### Method 1: Use Share function via Hik-Connect APP

Steps:

- (1) Run Hik-Connect app at your mobile and login your account;
- (2) Go to hik-connect tab->click your device->click Device Information -> Share Device/ View My Shared Devices;

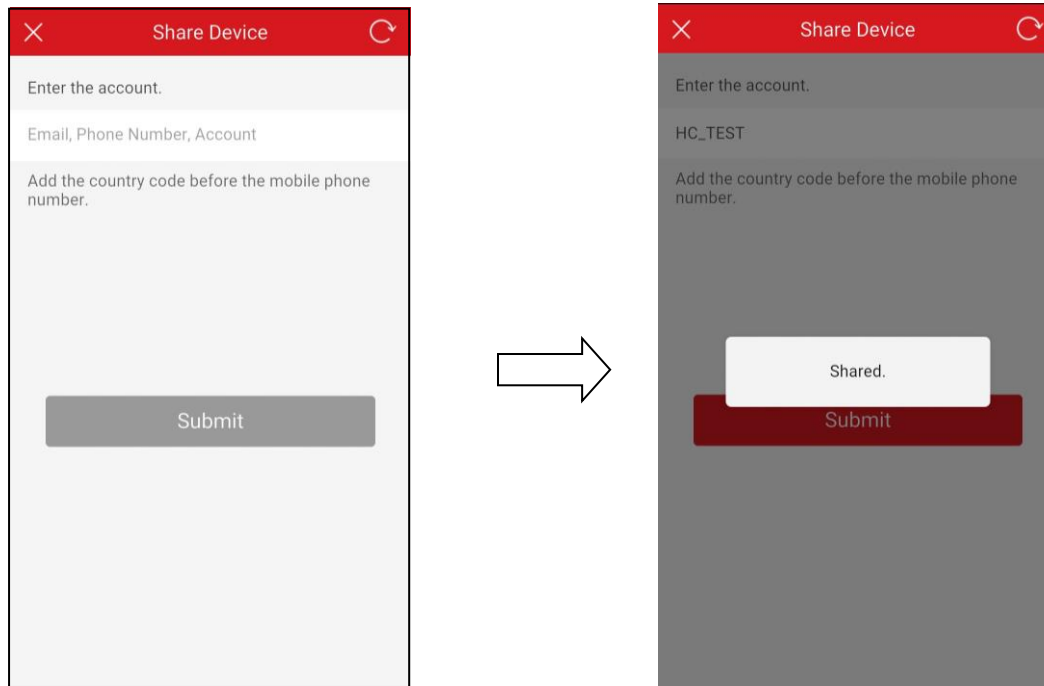


- (3) Click 'Share Device' -> input the Hik-Connect account you want to share (email address, phone number, hik-connect account are supported).

**Shared/Network busy/The account doesn't exist** will be returned according to the results.

<b>Title:</b>	How to use Hik-Connect Share function	<b>Version:</b>	v1.2	<b>Date:</b>	3/22/2017
<b>Product:</b>	Cameras, NVRs, DVRs	<b>Page:</b>	3 of 9		

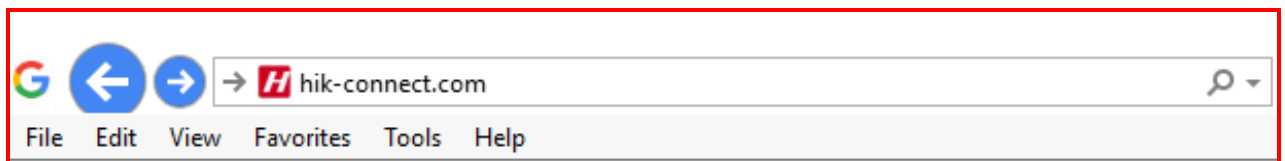
**HIKVISION**



## Method 2: Use Share function via [www.hik-connect.com](http://www.hik-connect.com) web portal

Steps:

(1) Type [www.hik-connect.com](http://www.hik-connect.com) into browser location bar;



(2) Login with your account user name and password.

Welcome!


[Forgot the Password?](#)

Login

---

No account? Register one now.

Register

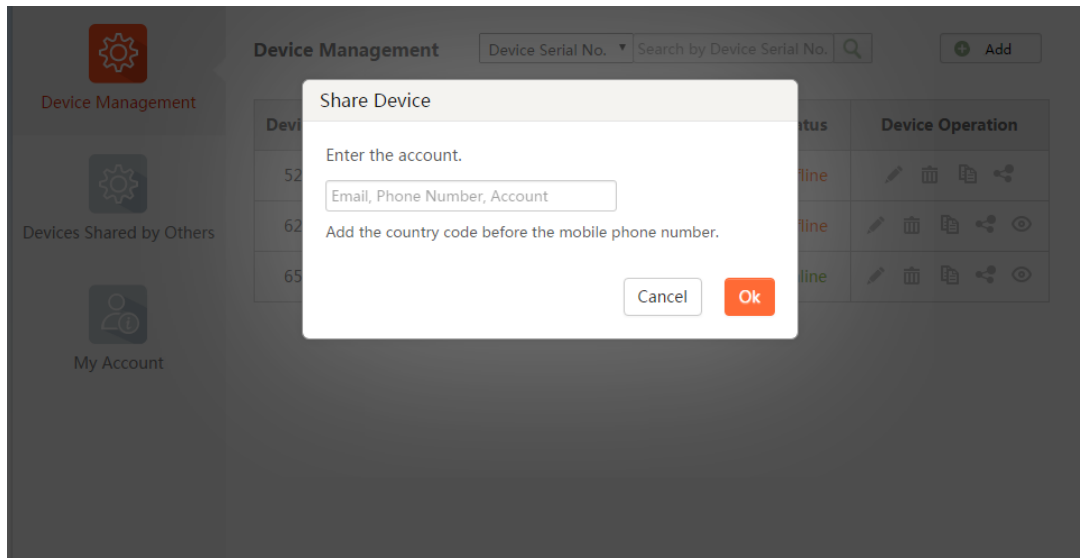
(3) Go to **Device Management** and click **Share** button . Input the Hik-Connect account you want to

<b>Title:</b>	How to use Hik-Connect Share function	<b>Version:</b>	v1.2	<b>Date:</b>	3/22/2017
<b>Product:</b>	Cameras, NVRs, DVRs	<b>Page:</b>	4 of 9		



share (email address, phone number, hik-connect account are supported).

**Shared/Network busy/The account doesn't exist** will be returned according to the results.

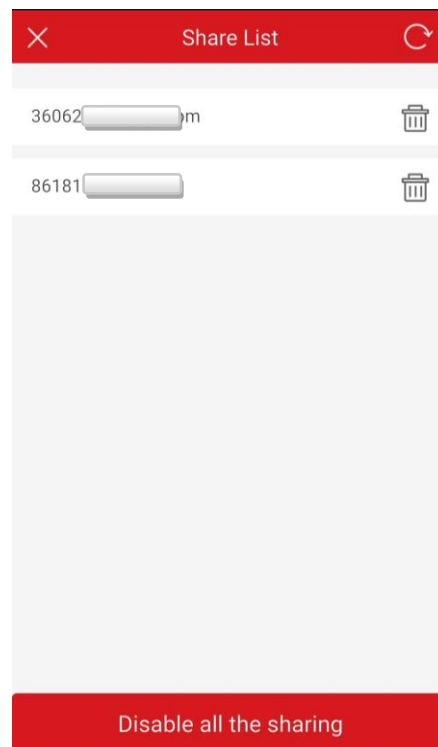
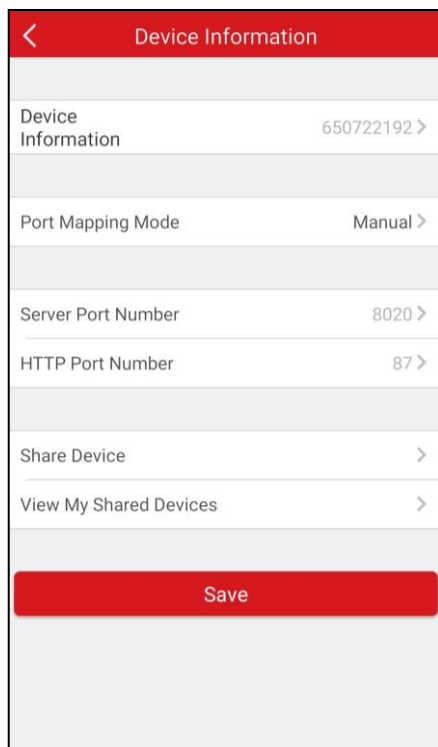


## How to manage my shared device

### 1: How to manage my shared device via app


Steps:

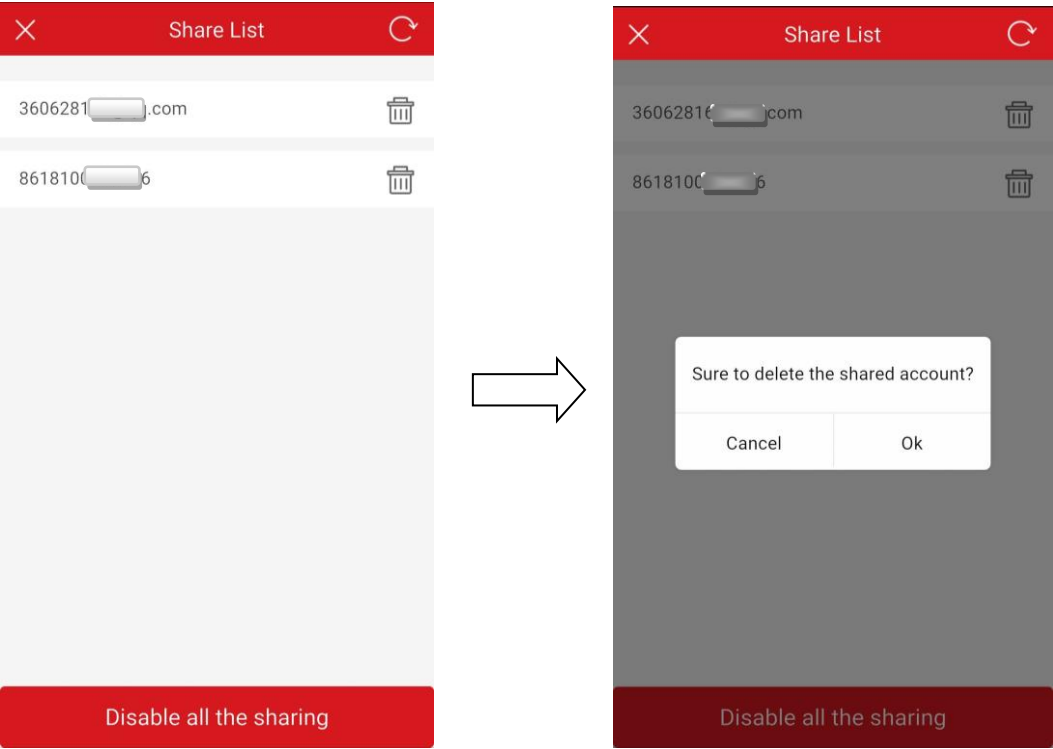
- (1) Run Hik-Connect app at your mobile and login your account;
- (2) Click **View My Shared Devices**, all the accounts that this device has been shared to would be displayed.



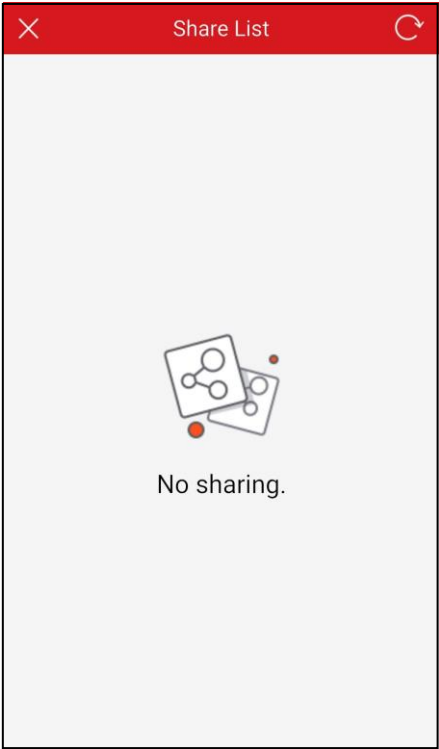
<b>Title:</b>	How to use Hik-Connect Share function	<b>Version:</b>	v1.2	<b>Date:</b>	3/22/2017
<b>Product:</b>	Cameras, NVRs, DVRs	<b>Page:</b>	5 of 9		



(2) Click  to select the account you want to stop sharing. You can also disable all the sharing.





(3) If you disable all the sharing, it would look like this:




**2: How to manage my shared device via web portal**

<b>Title:</b>	How to use Hik-Connect Share function	<b>Version:</b>	v1.2	<b>Date:</b>	3/22/2017
<b>Product:</b>	Cameras, NVRs, DVRs	<b>Page:</b>	6 of 9		













Steps:


(1) Click  to check all the accounts that this device has been shared to. The  could only be seen when there is a share under your device.



Device Management



Device Serial No.  Search by Device Serial No.


Device Domain	Device Serial No.	IP/Port No.	Status	Device Operation
523307819	523307819	115 <input type="text"/>	Offline	   
623050060	623050060	183 <input type="text"/>	Offline	   
650722192	650722192	<input type="text"/> 0.64/87	Online	   




Sharing List

650722192 is shared to the accounts:


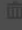
8618 <input type="text"/> 36	
3606 <input type="text"/> .com	

(2) Click  to select the accounts you want to stop sharing. You can select one account or several accounts.



Sharing List

650722192 is shared to the accounts:

86181001911	
360628163@	

Delete Share Account

Sure to delete the shared account?

<b>Title:</b>	How to use Hik-Connect Share function	<b>Version:</b>	v1.2	<b>Date:</b>	3/22/2017
<b>Product:</b>	Cameras, NVRs, DVRs	<b>Page:</b>	7 of 9		

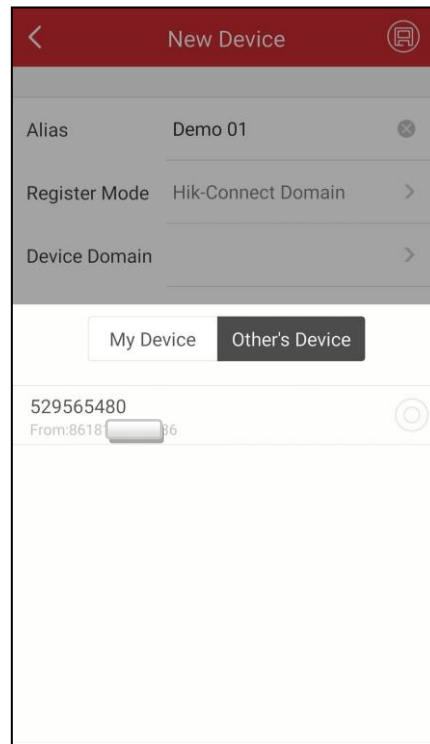


# How to manage the device shared by others

## 1: How to manage the shared device by others via app

Steps:

- (1) Run Hik-Connect app at your mobile and login your account;
- (2) Go to Domain tab-> click **Manual Adding**-> select Register Mode as **Hik-Connect Domain**->go to **Device Domain**, then you can find the device shared by others. Together with the shared device are the device domain name & the account which shares this device.




## 2: How to manage the device shared by others via web portal

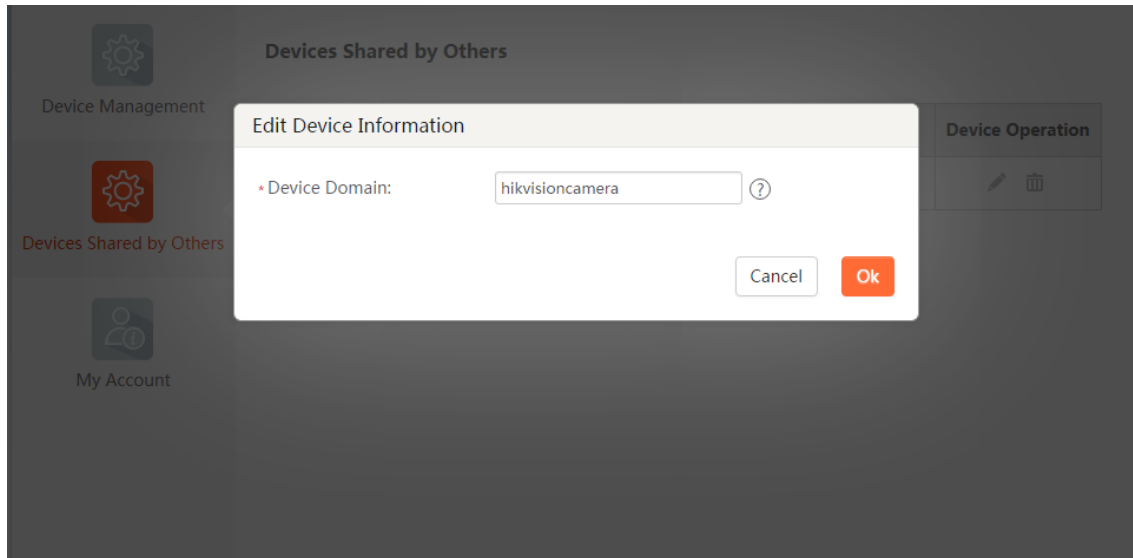
Steps:


- (1) If your account receive a share, there will be an **Added Device** column on web browser.

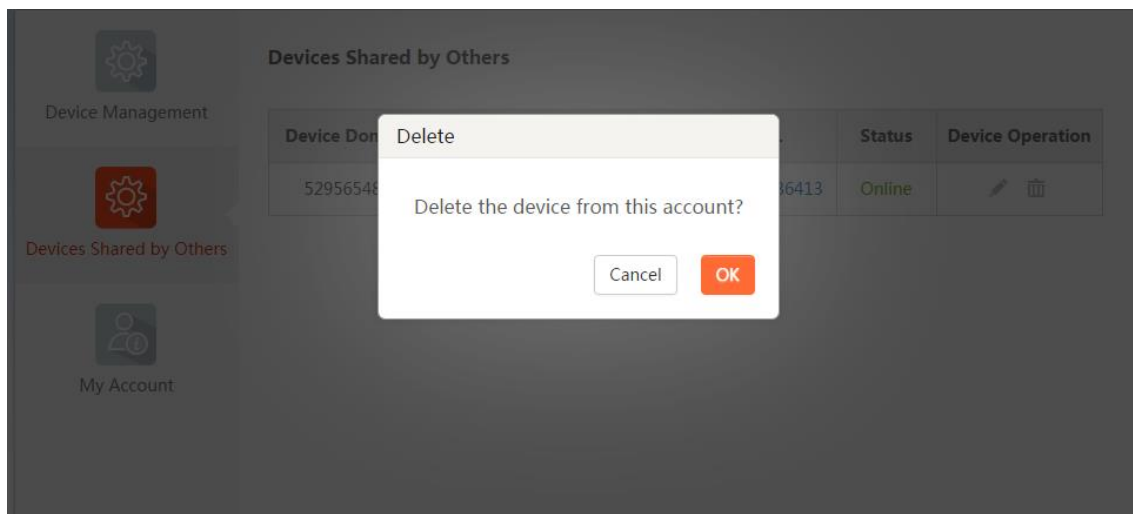


<b>Title:</b>	How to use Hik-Connect Share function	<b>Version:</b>	v1.2	<b>Date:</b>	3/22/2017
<b>Product:</b>	Cameras, NVRs, DVRs	<b>Page:</b>	8 of 9		

(2) Click **Edit**  to edit the device domain.



(3) Click  to delete the device that others shared to your account.



## FAQ

Q: If I delete the account I shared to or cancel the share of my device, what will happen to the receiver?

A: On www.hik-connect.com, the device shared by others will disappear. On Hik-Connect APP, the device domain under **Other Device** in Hik-Connect domain will disappear. However, if you've added the shared device by Hik-Connect domain name to **Device tab**, it won't be deleted; but you can't access or get the stream of this device anymore once its external IP or ports is changed.

Q: Someone shared his device to my account, could I just live view on Hik-Connect tab and receive alarm push on alarm tab?

A: No, currently, you have to add it to **Device tab** by its domain name in order to live view or watch the playback.

Q: How to make sure the device domain name I shared to other accounts is accessible?

A: If you could access the device by its Hik-Connect domain name or external IP and ports, other accounts receiving your share could, too.



<b>Title:</b>	How to use Hik-Connect Share function	<b>Version:</b>	v1.2	<b>Date:</b>	3/22/2017
<b>Product:</b>	Cameras, NVRs, DVRs	<b>Page:</b>	9 of 9		



**First Choice for Security Professionals**  
***HIK*VISION Technical Support**