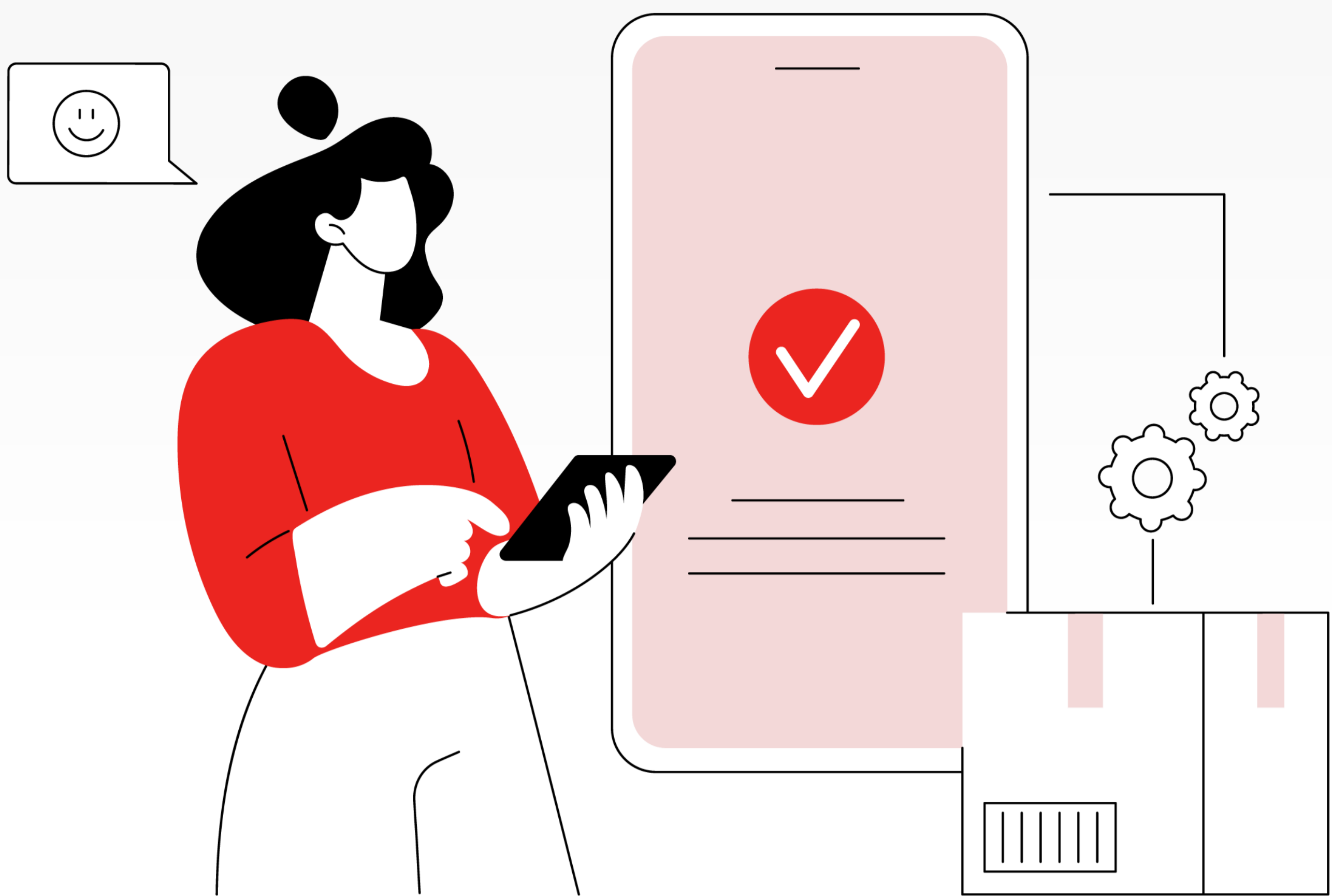


HOW TO

● Share Devices on Hik-Connect: Personal Mode - 3 Methods



The guide introduces how to share a device on the Hik-Connect app in personal mode. You can use the sharing function when you need to allow another person to live view or playback the device, etc.

Method 1. Create temporary or long-term QR Code

Method 2. Scan QR Code face to face.

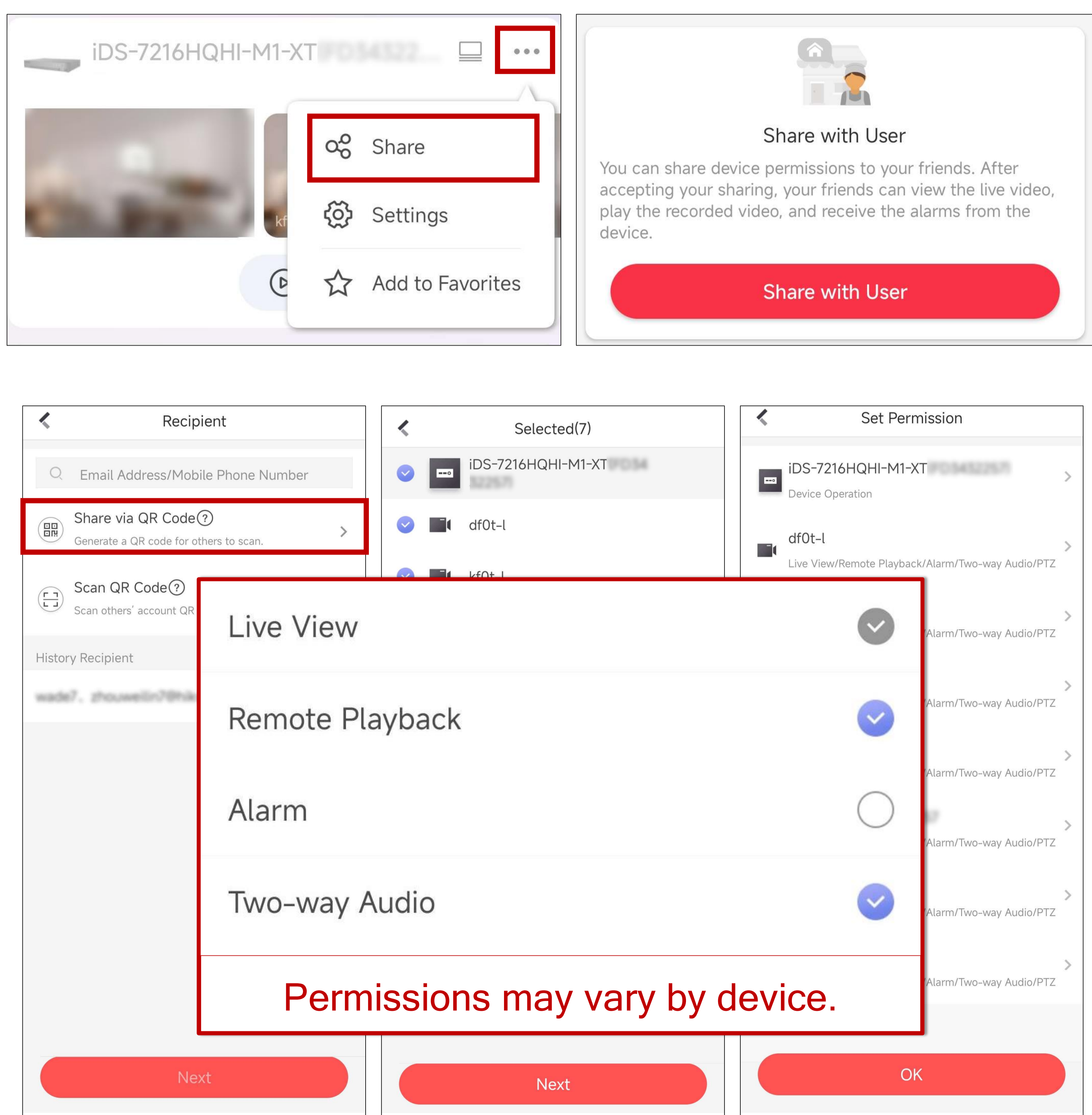
Method 3. Share via email address/mobile phone number

Note: Devices can only be shared between accounts **registered** in the **same region**. eg. an account registered in country A cannot share devices with an account registered in country B.

Create temporary or long-term QR Code

Tap ... to enter **Share**, **Share with User** > **Share via QR code**.

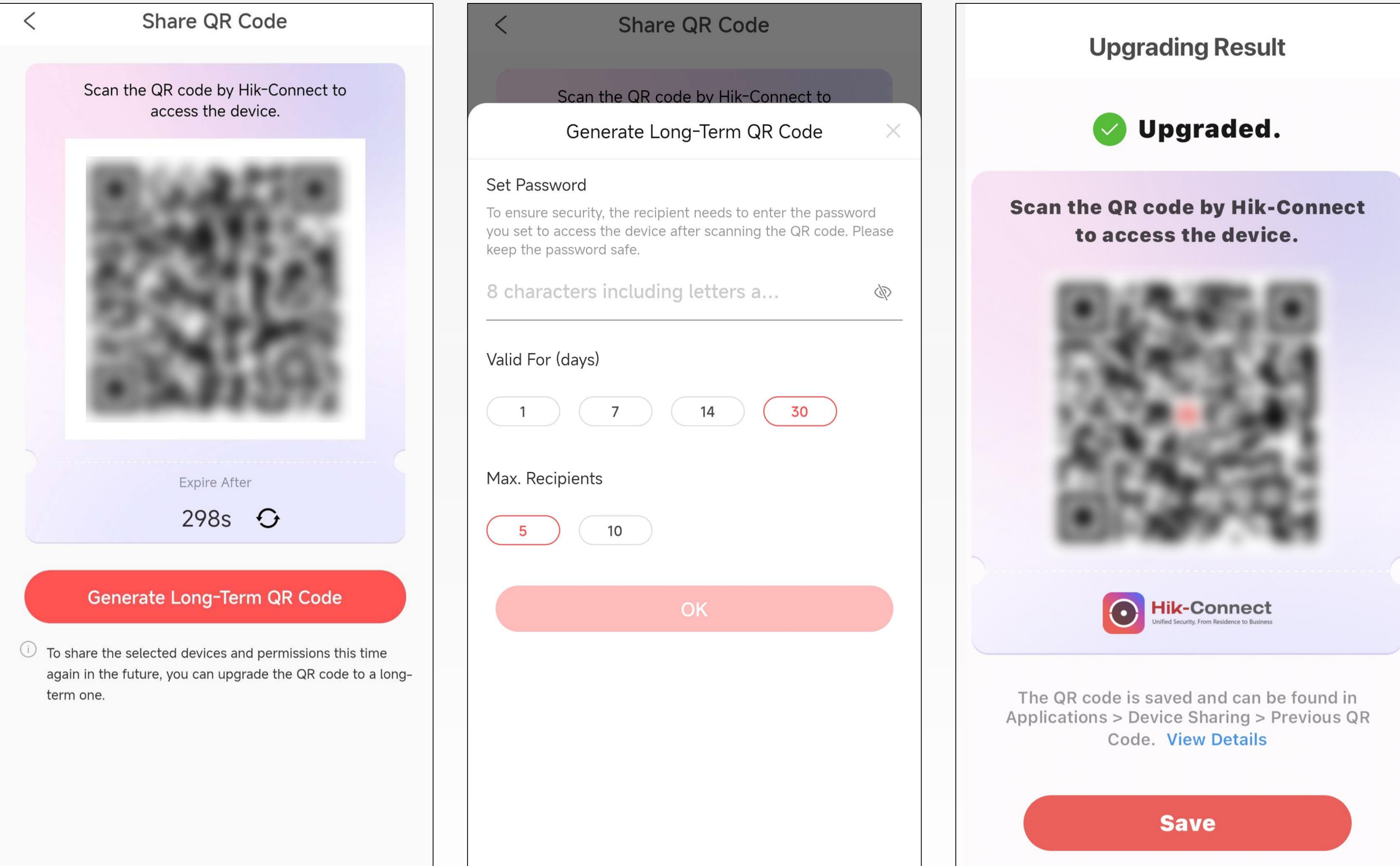
Choose channels and set permissions for sharing content



The default QR code is **temporary** with a 300-second validity.

To create a long-term QR code, the sharer can select

'Generate Long-Term QR Code', set a password, specify the 'Validity (days)' and 'Max Recipients,' then tap 'Save' to save the QR code image.



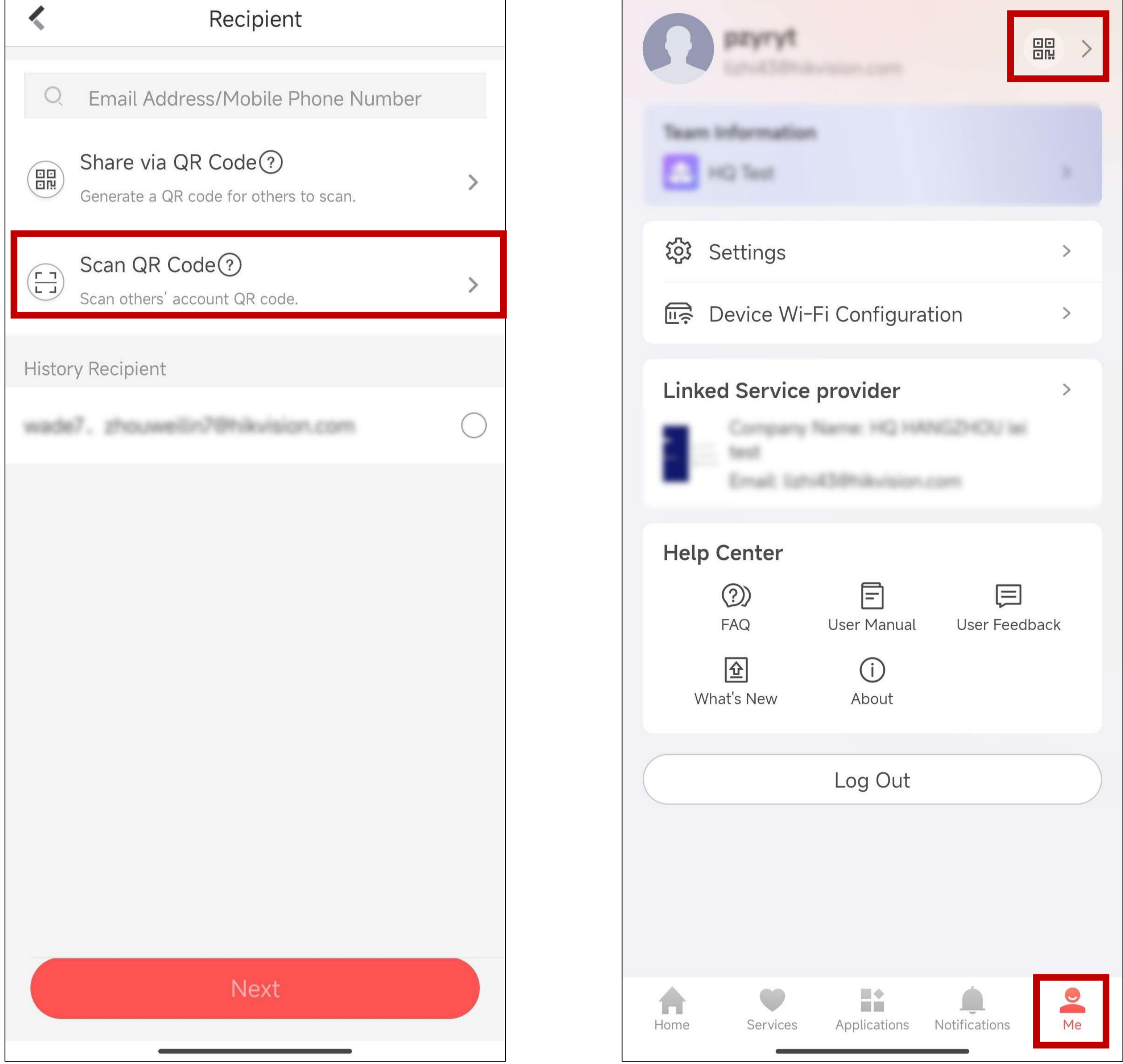
Scan QR Code face-to-face.

When sharing face-to-face, scanning the QR code is the recommended method.

The **sharer** should then use their account to access the 'Scan QR Code' feature and **scan** the receiver's displayed QR code. The **receiver** should open their account, tap the QR code icon in the top right corner to **display their QR code**.

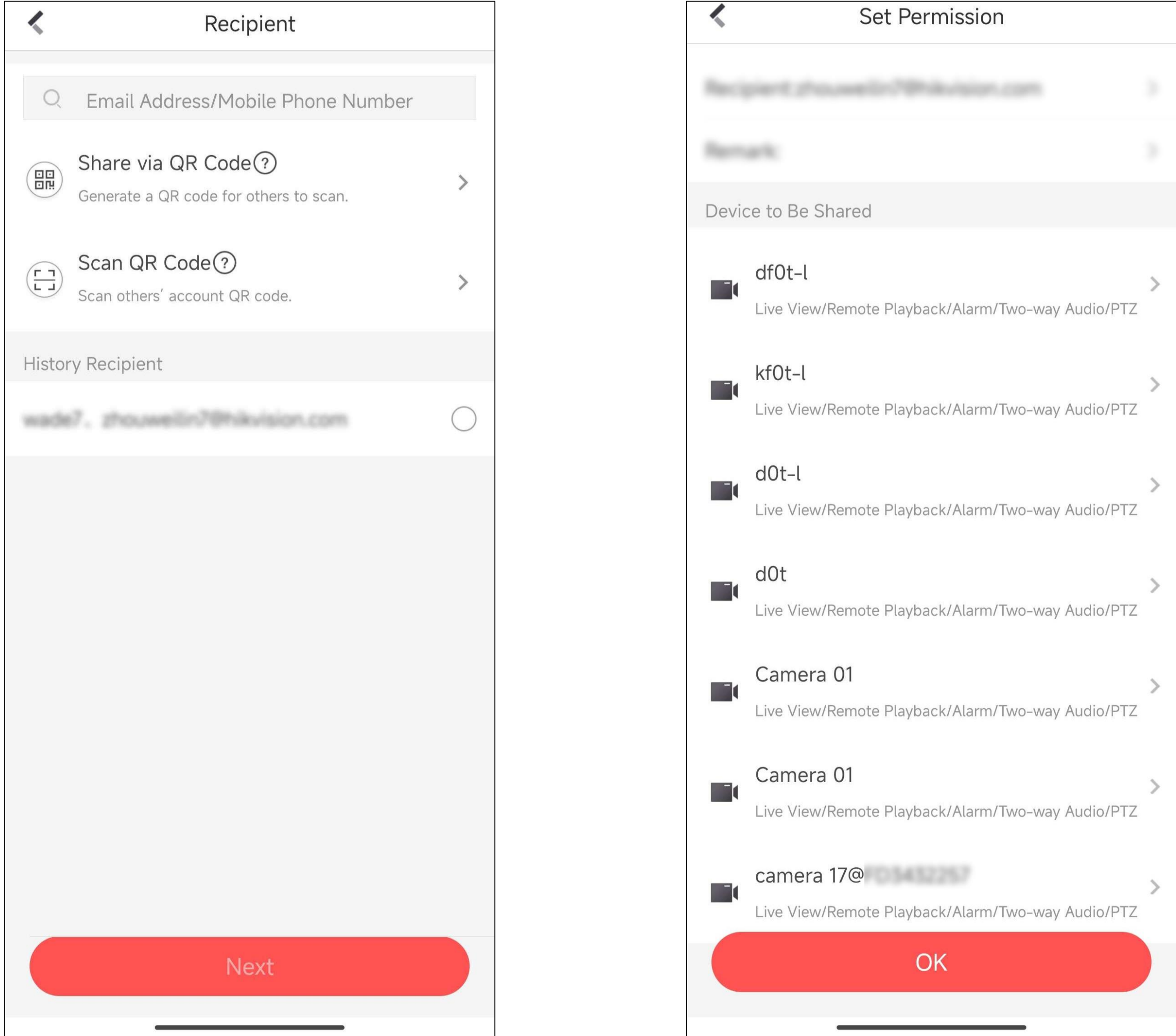
Sharer

Receiver



Share by email address/mobile phone number

The sharer can also share the device by entering the receiver's Hik-Connect account email or mobile phone number. There is no time limit for the sharing validity.



Above are the three methods for sharing a device. The receiver can remove the shared device at any time without affecting the sharer's access. However, if the sharer deletes the device, the recipient's access will also be revoked.