

Network Video Recorder

Version: V4.21.000 build190423

Release Note

(2019-4-25 External)

Firmware Basic Information	Firmware Version:	V4.21.000 build190423
	SDK Version:	V6.0.2.30_build20190325
	Play Library:	7.3.3.61
	IVMS-4200:	V2.6.18.2 build20190326
	Web component:	V4.0.1 build190315
	OpenSDK Version:	V1.5.55.1 build 181101

Reason of Upgrade

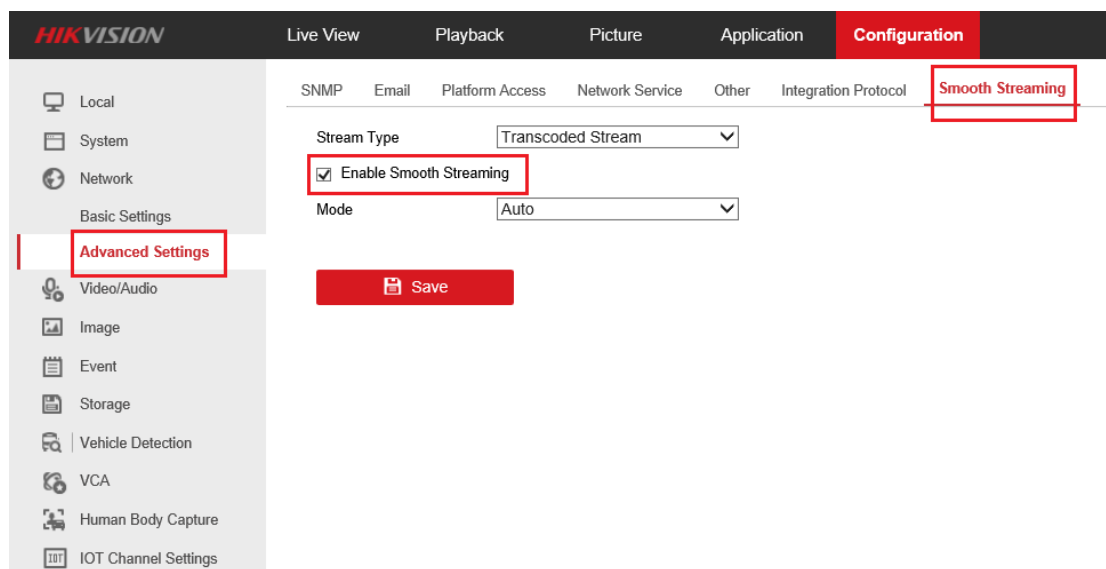
Add new features and optimize product performance.

New features

1. 【Smooth Streaming】

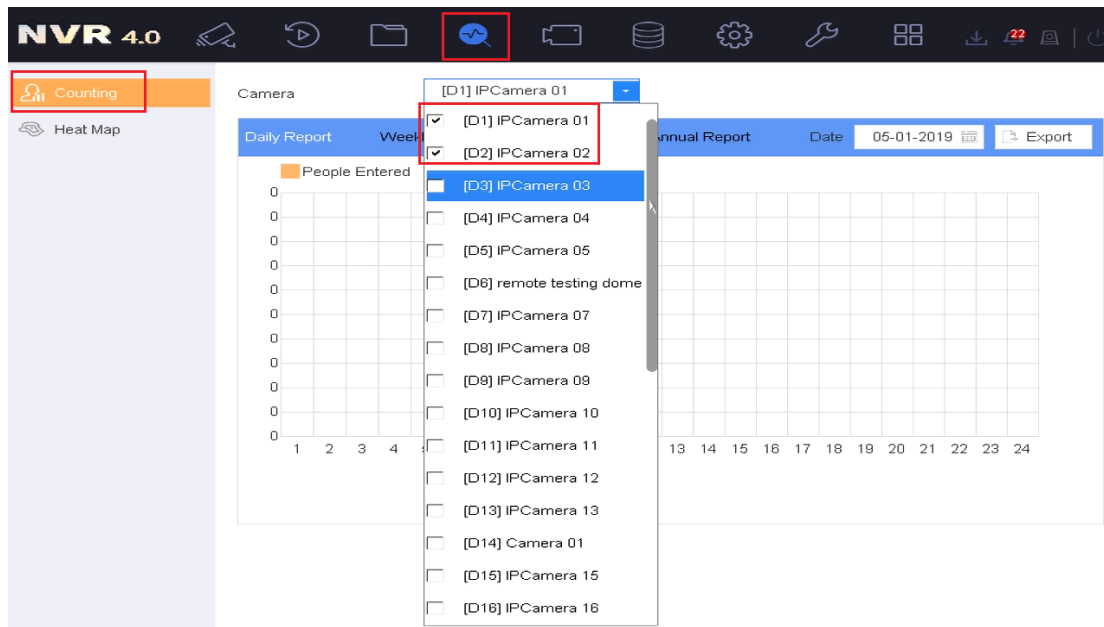
- 1) Low bandwidth preview and playback, support up to 4 channels.
- 2) Web and 4200 support configuring, and only 4200 supports preview and playback.

Web doesn't support preview and playback.

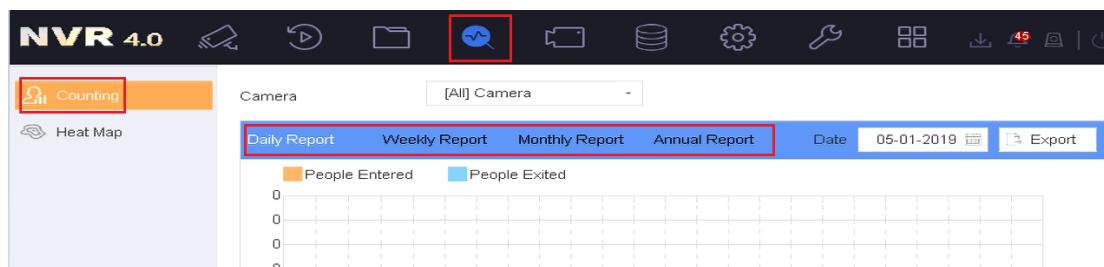


2. 【Counting Statistics】

- 1) It can support display counting statistics by selecting channels in local GUI and Ivms4200.

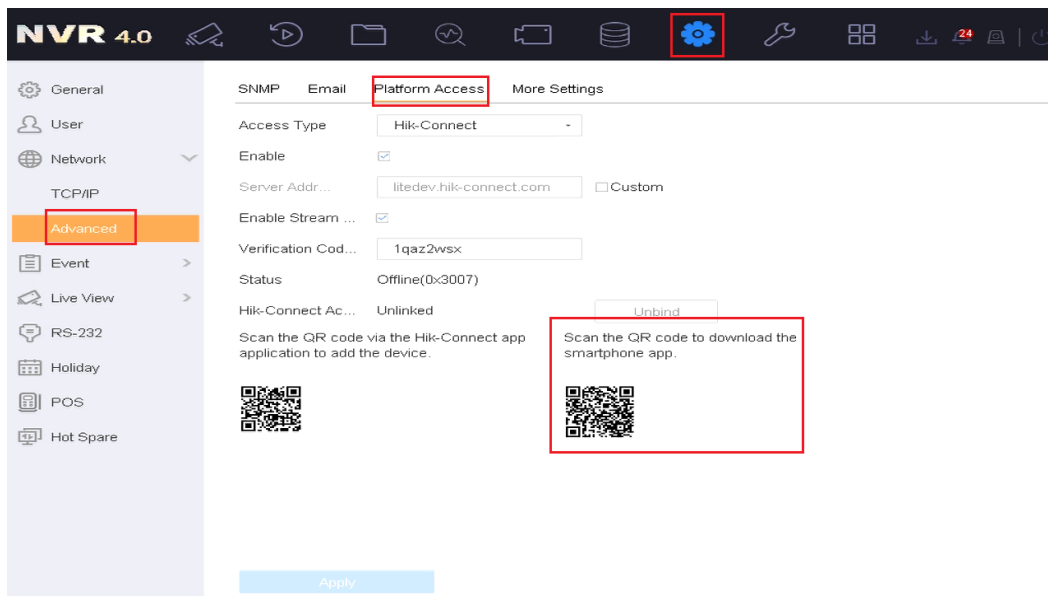


2) Support display and export reports by daily, weekly, monthly and annual.



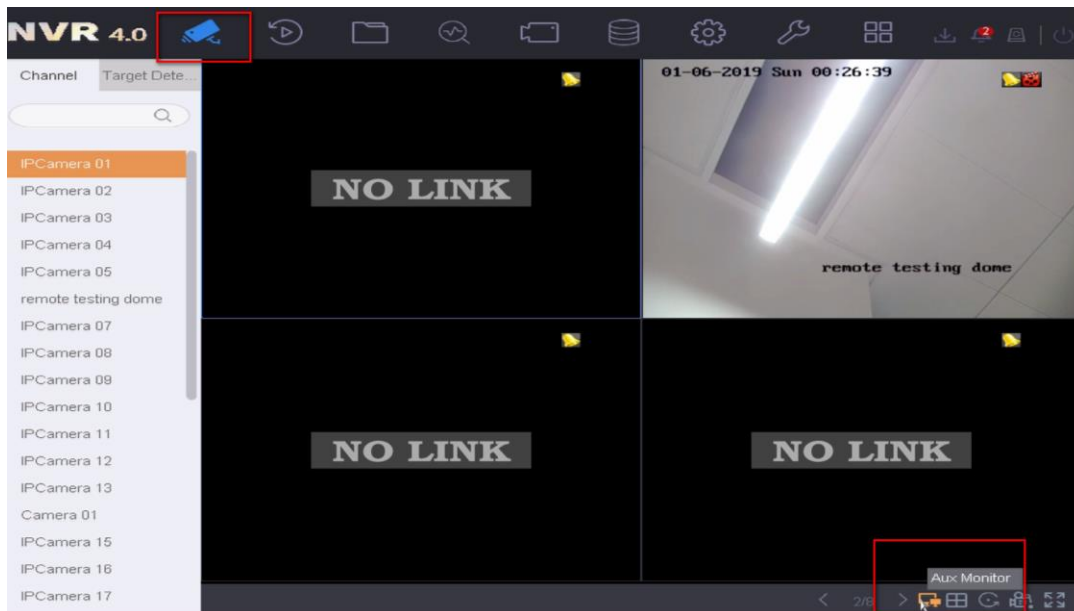
3. 【Hik-connect Download QR Code】

Hik-connect Download QR code is added in Platform Access interface of NVR local GUI.

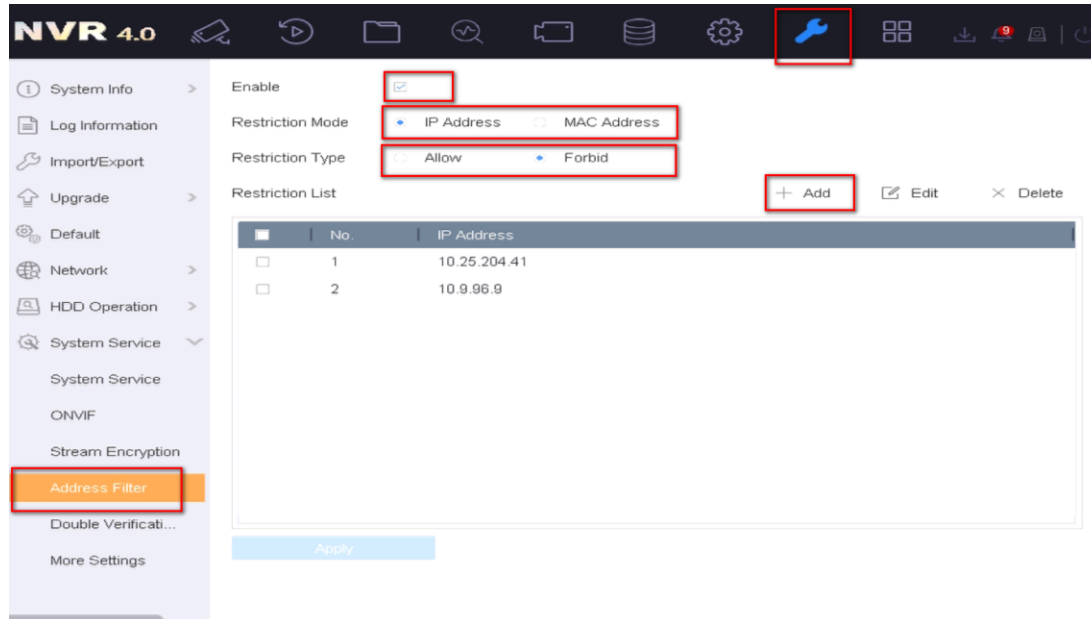


4. 【Main and Auxiliary Menu Switching】

- 1) Support non-homologous devices to support this function.
- 2) There is no resolution limit for the operation of primary and secondary ports, and they can be switched as long as they are supported.
- 3) Only the current port can operate PTZ after switching.



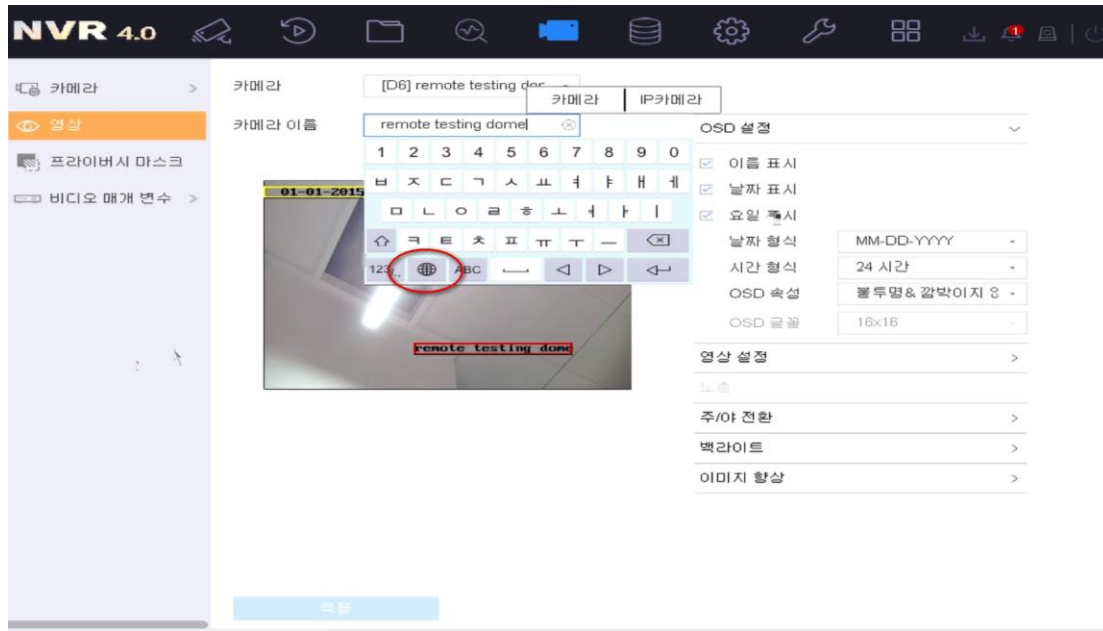
5. 【IP, MAC Address Black-and-white List Function】



- 1) Local GUI and web can set blacklists and whitelists of IP and MAC.
- 2) Only one (IP or MAC) black-and-white list can be enabled.
- 3) MAC and IP address black-and-white lists can support 32 addresses separately.
- 4) The actual IP and MAC are acquired in the router with IP and MAC addresses, and the IP and MAC on the router side are acquired outside the router.
- 5) The IP and MAC black-and-white list addresses set can be modified and deleted.

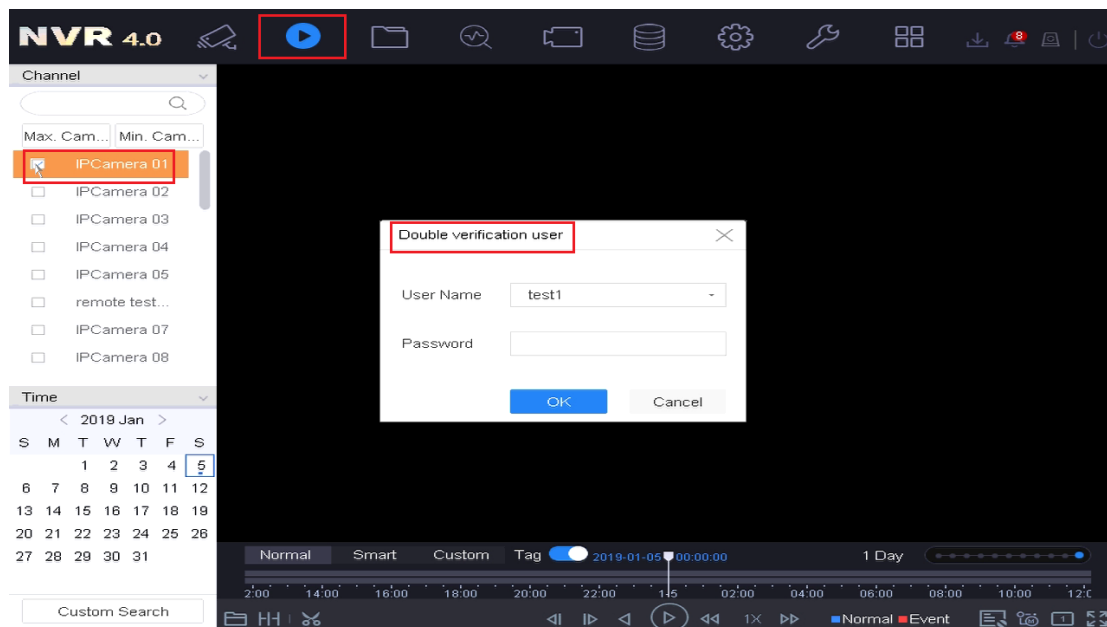
6. 【Support Korean Soft Keyboard】

When the local language is switched to Korean, the keyboard input supports Korean.

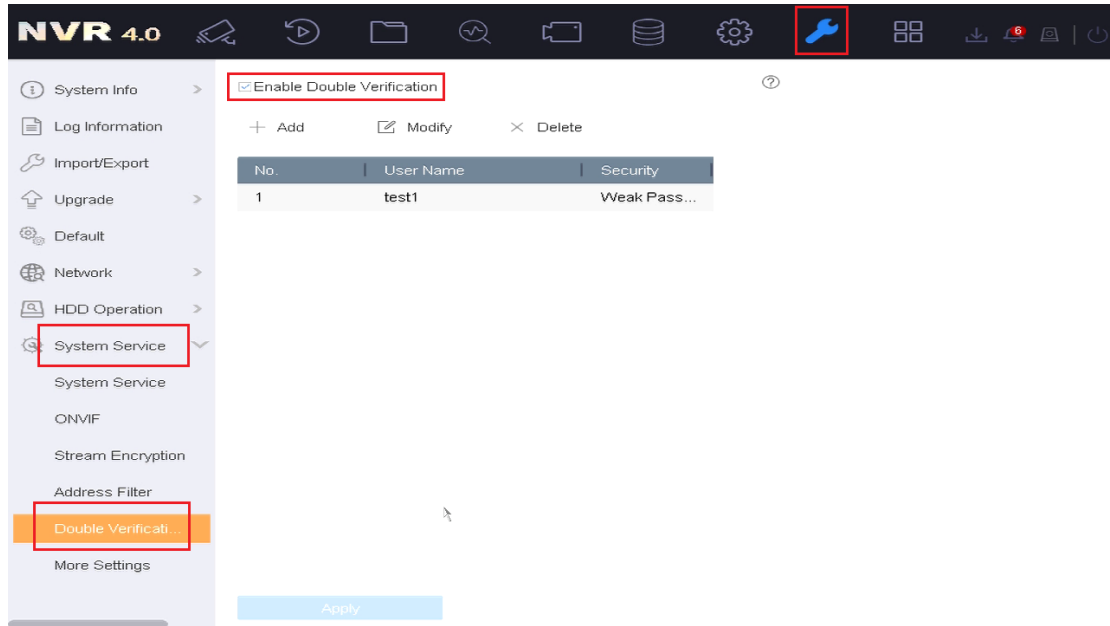


7. 【Double Verification】

- 1) If enabling Double Verification, non-admin users need secondary password authentication when local GUI playback, video export, remote video playback/download in web or IVMS4200.

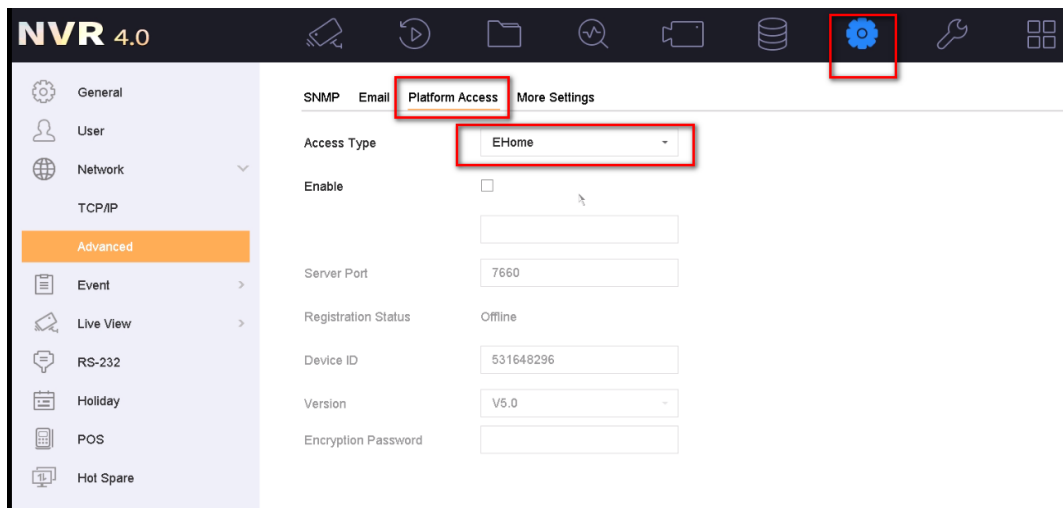


- 2) Admin users don't need Double Verification and only admin user can configure the function.
- 3) Double Verification can newly add up to 8 users. Double Verification users can only be used for secondary authenticate, but can't be used for logging in NVR.



8. 【EHOME 5.0 Protocol】

The device can be connected to the platform through E-home5.0 in LAN.



9. 【Two-way Audio Function between NVR Channels And Hik-Connect】

- 1) It can be turned on and off on Hik-connect.
- 2) Only one channel is supported, and the channel must be in living view.
- 3) The version of Hik-Connect must be V3.7.0 or later.

10. 【Thermal Camera Alarm Image Upload to Hik-Connect】

- 1) After the thermal camera reports the alarm to NVR, NVR synchronizes the alarm information to Hik-Connect.
- 2) The alarm picture is the thermal channel, not the visible light channel.

11. 【Add POE setting in web】

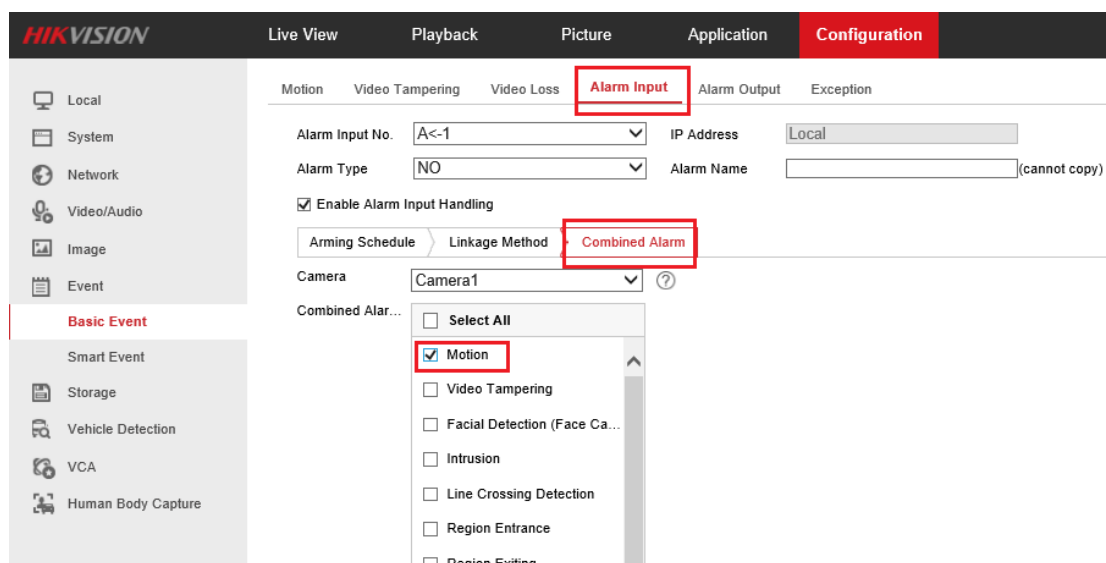
- 1) It is supported to configure IP address of POE network card in web.

The screenshot displays the Hikvision web interface for configuring network settings. The top navigation bar includes 'Live View', 'Playback', 'Picture', 'Application', and 'Configuration'. The left sidebar shows 'Local', 'System', and 'Network' options, with 'Network' selected. Under 'Network', 'Basic Settings' is highlighted. The main content area shows the 'TCP/IP' configuration for 'Lan1'. The 'NIC Type' is set to 'Auto'. The 'DHCP' checkbox is checked. The 'IPv4 Address' is '10.9.96.28', 'IPv4 Subnet Mask' is '255.255.255.0', and 'IPv4 Default Gateway' is '10.9.96.254'. The 'IPv6 Address' is 'fe80::c62f:90ff:fea1:be4', and 'IPv6 Default Gateway' is empty. The 'Mac Address' is 'c4:2f:90:a1:0b:e4' and 'MTU' is '1500'. The 'DNS Server' section has 'Auto DNS' checked, with 'Preferred DNS Server' and 'Alternate DNS Server' both set to '10.1.7.97' and '10.1.7.98' respectively. The 'PoE Network Card Settings' section is highlighted with a red box, showing the IP address '192.168.254.1' and a green checkmark.

Configuration Item	Value
NIC Type	Auto
DHCP	<input checked="" type="checkbox"/>
IPv4 Address	10.9.96.28
IPv4 Subnet Mask	255.255.255.0
IPv4 Default Gateway	10.9.96.254
IPv6 Address	fe80::c62f:90ff:fea1:be4
IPv6 Default Gateway	
Mac Address	c4:2f:90:a1:0b:e4
MTU	1500
DNS Server	<input checked="" type="checkbox"/> Auto DNS
Preferred DNS Server	10.1.7.97
Alternate DNS Server	10.1.7.98
PoE Network Card Settings	192.168.254.1

12. 【Alarm In and other event types support combination alarm】

- 1) If Alarm In is configured with a combination alarm, the Alarm Input will not alarm separately, but only alarm for other events such as motion or smart events; If Alarm In is not set combination alarm, Alarm In should be alarmed alone.
- 2) The Arming Schedule for combination alarm shall be the same as other events such as motion detection or smart event.



13. 【Indonesian】

- 1) Indonesian language is supported in local GUI.

14. 【Add four types of smart event】

- 1) Four smart events are added: gathering, fast moving, parking detection, and loitering detection.

Modified functions

1. 【Optimize Keyboard Access】

- 1) For DS-1005K keyboard, after stopping patrol / starting patrol, the patrol icon will change and the tip text will change.
- 2) DS-1005K keyboard supports selecting the playback date for playback.
- 3) The target detection bar under the preview interface can be operated by keyboard.
- 4) Real-time playback can control the positioning, pause, start and exit functions of time points.

2. 【Optimize Thermal Camera Access】

- 1) Support VCA behavior analysis configuration on NVR.
- 2) Support temperature measurement and VCA alarm.
- 3) Support real-time temperature measurement guide.

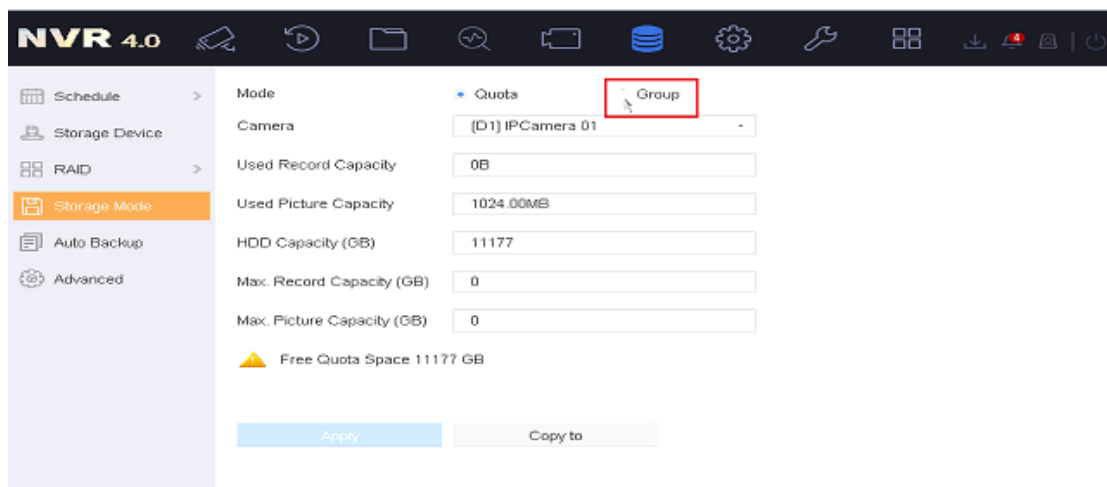
3. 【Virtual Host】

- 1) All models of I series including POE and non-POE NVR, can enable virtual host function, and generate connecting links.
- 2) After opening the virtual host, both POE and non-POE NVR can generate jump links for POE and non-POE channels.
- 3) Support skipping the website of third-party camera.

4. 【Array & group mode are mutually exclusive】

- 1) It can be detected when NVR is booting if Array and group mode coexist. If coexist, the local GUI will prompt "Quota mode provides higher data safety, and is recommended over array mode for HDD group". Select "Yes" and then the NVR will restart.

- 2) Array mode: It doesn't support Group mode when enabling Array. Group mode button is putting ash in local GUI, and there is no Group mode option in drop-down box in 4200.
- 3) Group mode: It doesn't support enabling Array when selecting Group mode. Enable RAID button is ash and cannot be selected, and array configuration page is hidden in 4200.



5. 【Optimize Search Speed of Hik-Connect Playback】

The hik-connects receives the alarm, and the alarm video can be played back after 5-15s.

6. 【Vehicle Detect black/white/other list support PTZ linkage】

- 1) PTZ linkage can be set in local and remote black and white list and other lists in vehicle detection and alarm.
- 2) When the vehicle detection alarm is triggered, the local trigger corresponding PTZ linkage item.

7. 【Optimize Onvif Access】

- 1) Optimize the bit stream access logic.

- 2) Support multi-channel camera access.
- 3) Pull-Point Notification is supported by default, and Base Notification is used if the device does not support Pull-Point Notification.

Related product list:

I series NVR	DS-9600NI-I16, DS-9600NI-I8 DS-7700NI-I4(/P), DS-7600NI-I2(/P) DS-7700NI-I4(B)(/P), DS-7732NI-I4/24P
--------------	--

Customer Impact and Recommended Action

This new firmware upgrade is to improve product performance, and will take effect automatically after upgrading from previous versions. We'd like to inform you the above changes. Also, we are sorry for any possible inconvenience of use-habit changes caused by this action.

Note:

- Hikvision has all rights to alter, modify and cancel this notice.
- Hikvision doesn't give any guarantee for old models' stock.
- Hikvision is not liable for any typing or printing errors.
- For special model's change details, please contact our local technical support team.